

Manchester Evening Herald

THE WEATHER Forecast by U. S. Weather Bureau, New Haven

NET PRESS RUN AVERAGE DAILY CIRCULATION for the month of December, 1928 5,209

VOL. XLIII, NO. 90. (Classified Advertising on Page 18) SOUTH MANCHESTER, CONN., TUESDAY, JANUARY 29, 1929. (TWENTY PAGES) PRICE THREE CENTS

SMITH CALLS ON NEW PRESIDENT JUST FOR CHAT

Al Wears Famous Brown Derby as He Meets Mr. Hoover—They Talk on General Subjects.

Miami Beach, Fla., Jan. 29.—Wearing his famous brown derby of campaign days, a cigar cocked jauntily at an angle and at perfect ease, ex-Governor Al Smith went calling today on President-Elect Herbert Hoover.

PRESIDENT URGES FURTHER ECONOMY

Without Saving Present Prosperity Cannot Continue, He Says in Speech.

Washington, Jan. 29.—After a final injunction from President Coolidge that without constructive economy in government, prosperity cannot continue, he said today that the fiscal year ending June 30 may not be barred by the first deficit since the budget system went into effect.

Loyal Troops Quell Revolt Near Madrid

Hendaye, Franco-Spanish Frontier, Jan. 29.—A Spanish artillery regiment stationed at Ciudad Real revolted this morning, but the mutiny was quickly quelled by loyal government troops, according to a report from Madrid.

AMERICAN GIRL MAY RULE AS QUEEN IN THE BALTIC

London, Jan. 29.—Will an American girl ascend a newly created throne and rule as queen of a domain to be known as the "United Kingdom of the Baltic States"?

NIGHT CLUBBERS ARE HAPPY NOW

New York, Jan. 29.—Broadway night club proprietors, especially those awaiting trial as liquor law violators, were given a pleasant "kick" when they read today that forty dry agents who secured evidence are to lose their jobs.

FIVE DEAD, SIX DYING IN NEW ENGLAND FIRES

Fall River, Mass., and New London, This State, Scenes of the Tragedies.

Automobile Show Opens Tomorrow

The annual exhibition of automobiles by the Manchester Auto Dealers Association opens tomorrow for four days at the State Armory here.

NORWALK COPS NAB CONVICTS AFTER CHASE

Follow Two Escaped Prisoners to Danbury When Their Auto Upsets and They Surrender.

Norwalk, Conn., Jan. 29.—Arthur Landry, 28, and Leo Landry, 27, of Revere, Mass., who escaped from the penitentiary at Norwalk, Mass., on Sunday, were captured in Danbury today by local police after a wild twenty-five mile chase.

BRITISH STEAMSHIP IS DRIFTING SOUTH

Silver Maple Is Now 85 Miles from Position She Last Reported.

LOST A WEEK ON ICE FISHERMAN RESCUED

Lewis Sweet Stumbles Seven Miles Through Snow to a Village.

KING'S CONDITION

London, Jan. 29.—King George's steady progress towards recovery continued today, it was officially announced at Buckingham Palace.

GRAYSON NOTE IN A BOTTLE

Found in Salem Harbor—Said by Friends of Lost Aviator to Be in Her Handwriting.

NEW YORK SHIVERS AS MERCURY DROPS

Seven Liners Overdue; Seven Others in Distress; Gale Sweeps City.

LEAGUE OFFICIAL COMMITS SUICIDE

"Jim" Price, Secretary of Boston Red Sox Kills Self With a Razor.

CAPT. FRIED AND CREW STILL BEING LIONIZED

Their Ship to Sail at Noon Tomorrow So This is Last Day on Land.

MILLS' FATHER DEAD

New York, Jan. 29.—Ogden Mills, financier and art patron and father of Ogden L. Mills, under secretary of the treasury, died of pneumonia at his home here early today.

TIME CLAUSE TO REMAIN IN CRUISER BILL

Washington, Jan. 29.—In the face of opposition from President Coolidge and President-elect Hoover, the Senate will retain the "time clause" in the administration's new cruiser bill.

NEW BILLS FLOOD OUR LEGISLATURE AT TODAY'S MEET

Early Adjournment So That Members Could Have Time to Devote to Committee Hearings—Many Empty Seats in the House; The Important Bills.

BLODGETT SUGGESTS TAX LAW CHANGES

State Commissioner Gives Governor and Legislature Reason for Them.

ENGINEER HAS PRODUCED 5 MILLION VOLT CURRENT

Hopes for Double That Amount Which is One-Tenth of Lightning, He Makes Public Today.

LEAGUE OFFICIAL COMMITS SUICIDE

"Jim" Price, Secretary of Boston Red Sox Kills Self With a Razor.

CAPT. FRIED AND CREW STILL BEING LIONIZED

Their Ship to Sail at Noon Tomorrow So This is Last Day on Land.

MILLS' FATHER DEAD

New York, Jan. 29.—Ogden Mills, financier and art patron and father of Ogden L. Mills, under secretary of the treasury, died of pneumonia at his home here early today.

NEW BILLS FLOOD OUR LEGISLATURE AT TODAY'S MEET

Early Adjournment So That Members Could Have Time to Devote to Committee Hearings—Many Empty Seats in the House; The Important Bills.

BLODGETT SUGGESTS TAX LAW CHANGES

State Commissioner Gives Governor and Legislature Reason for Them.

ENGINEER HAS PRODUCED 5 MILLION VOLT CURRENT

Hopes for Double That Amount Which is One-Tenth of Lightning, He Makes Public Today.

LEAGUE OFFICIAL COMMITS SUICIDE

"Jim" Price, Secretary of Boston Red Sox Kills Self With a Razor.

CAPT. FRIED AND CREW STILL BEING LIONIZED

Their Ship to Sail at Noon Tomorrow So This is Last Day on Land.

MILLS' FATHER DEAD

New York, Jan. 29.—Ogden Mills, financier and art patron and father of Ogden L. Mills, under secretary of the treasury, died of pneumonia at his home here early today.

Automobile Show Opens Tomorrow

The annual exhibition of automobiles by the Manchester Auto Dealers Association opens tomorrow for four days at the State Armory here.

TREASURY BALANCE Washington, Jan. 29.—Treasury balance Jan. 26: \$137,997,534.96.





DAILY RADIO PROGRAM

Tuesday, January 29.

- Dinosaur eggs, mosquitoes ten million years old... 280.2—WTAM, CLEVELAND—1070. 6:00—Studio concert. 8:30—WEAF programs (2 hrs.). 11:00—Radio dance music.

- 280.2—WTAM, CLEVELAND—1070. 6:00—Studio concert. 8:30—WEAF programs (2 hrs.). 11:00—Radio dance music. Leading DX Stations. 405.4—WBS, ATLANTA—740.

ANXIOUS TO SEE TOWN GO 'REO'

George A. Brown Takes Agency for Well Known Make and Will Push Them

George A. Brown, well known automobile dealer and garage proprietor at 10 Cooper street, South Manchester, has assumed the responsibility for making Manchester territory a Reo community.

Rockville

State Directorate Here Saturday.

The state directorate of girls' clubs met here in the girls' club rooms on Saturday afternoon.

Parish Party.

A parish party will be held this evening at St. John's Episcopal church.

To Hold Mission.

Rev. George T. Sinnott, pastor of St. Bernard's Catholic church has announced that there will be two weeks' mission starting Sunday, February 17.

Funeral of Mrs. Babington.

The funeral of Mrs. Grace E. (Payne) Babington was largely attended from her late home on Union street this afternoon.



—Photo by Elite George A. Brown.

Wins Praise

The quality of her acting as the Private Secretary in "The News Parade" is winning the praise of movie fans everywhere for this lovely newcomer to the screen.



OLIVE SHEA

The vaudeville series program through WEAF and a nation-wide hook-up of N. B. C. stations at 11 o'clock Tuesday night, January 29, will feature the Duncan Sisters, Rosa and Vivian, famous crooners and dancers; Fourteen Brick Tons, a crack jazz orchestra made up of

titian-haired girls; the Avon Comedy Four, a famous entertainment group; Gladys Rice, noted soprano; George Price, theater headliner; Evans and Mayer, boy and girl crooning team; Muriel Pollack and Constance Mering, piano duo; Jo-

seph Regan, concert baritone; the Happiness harmony team; and Morton Downey. Each artist will present a bit of the entertainment that have made them famous in the vaudeville world. The program will last one hour.

COLLECTION FRAUDS NOW PREVALENT Epidemic of Agencies Noted by Chamber of Commerce Here.

The warning recently issued by the Chamber of Commerce in connection with the Kneckerbocker Adjustment Service company which was printed in The Herald and broadcast throughout New England, has aroused considerable interest and brought a number of replies from other Chambers of Commerce and Better Business Bureaus.

HIGH SCHOOL NOTES At a business meeting of the Sock and Buskin Dramatic Club held yesterday afternoon it was decided to enter into an agreement with one of the Washington Trip groups, on the producing of the play "Pals First".

ROCKEFELLER CLAIMING VICTORY OVER STEWART New York, Jan. 29.—With representatives of John D. Rockefeller claiming victory in his fight to oust Col. Robert W. Stewart as chairman of the board of the Standard Oil Company of Indiana, and representatives of Col. Stewart denying the claim, the "Battle of the Proxies" entered a new stage today.

FRANCE TO CO-OPERATE Paris, Jan. 29.—France will cooperate in any disarmament conference that President-Elect Heiberger may see fit to arrange, after he takes office at Washington, it was officially stated today. The following announcement was made at the foreign office: "France is ready to participate in a naval and arms conference as soon as Mr. Hoover issues the invitation."

JAPAN POSSESSES 51 ACTIVE VOLCANES, MORE THAN AN OTHER COUNTRY IN THE WORLD.

How to Avoid INFLUENZA... The Friendly Class of the Union Congregational church will hold its regular monthly social and meeting in the church social rooms on Wednesday evening, February 6.

Two Days Left to get a UNIVERSAL Heating Pad with a Clinical Thermometer at our January Special price and terms. ONLY \$8.50. The Manchester Electric Co. 773 Main St. Phone 1700.

Sharp Cold Days Like These Call For Good Coal. The W. G. Glenney Co. Coal, Lumber and Masons' Supplies. Allen Place, Manchester. Phone 126.

Cummingham RADIO TUBES. FOR RADIO SERVICE PHONE 1938. Barstow Radio Service. Wm. E. Kraus Expert Radio Service 669 Poland Turnpike, South Manchester. Phone 364-2.

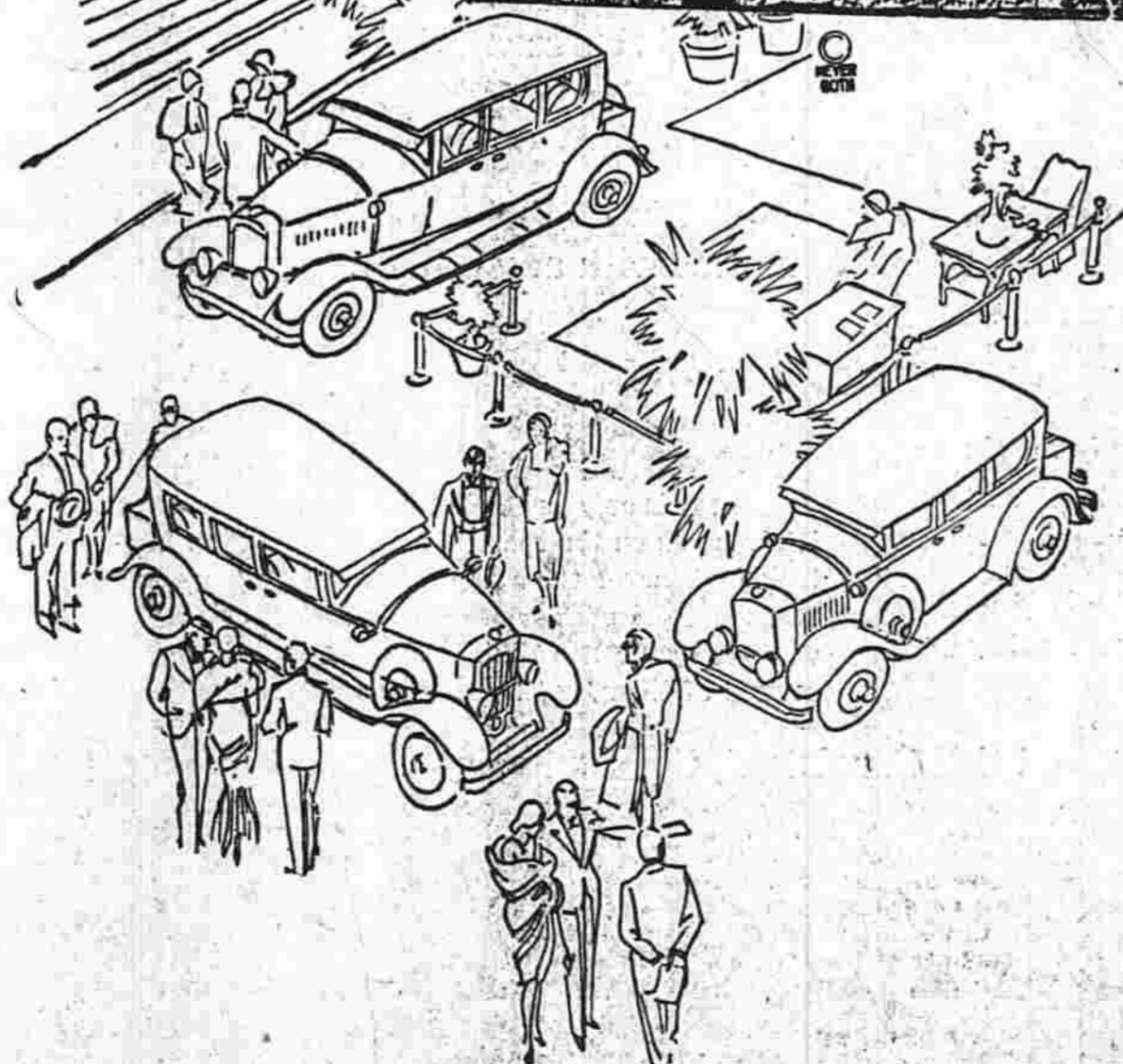
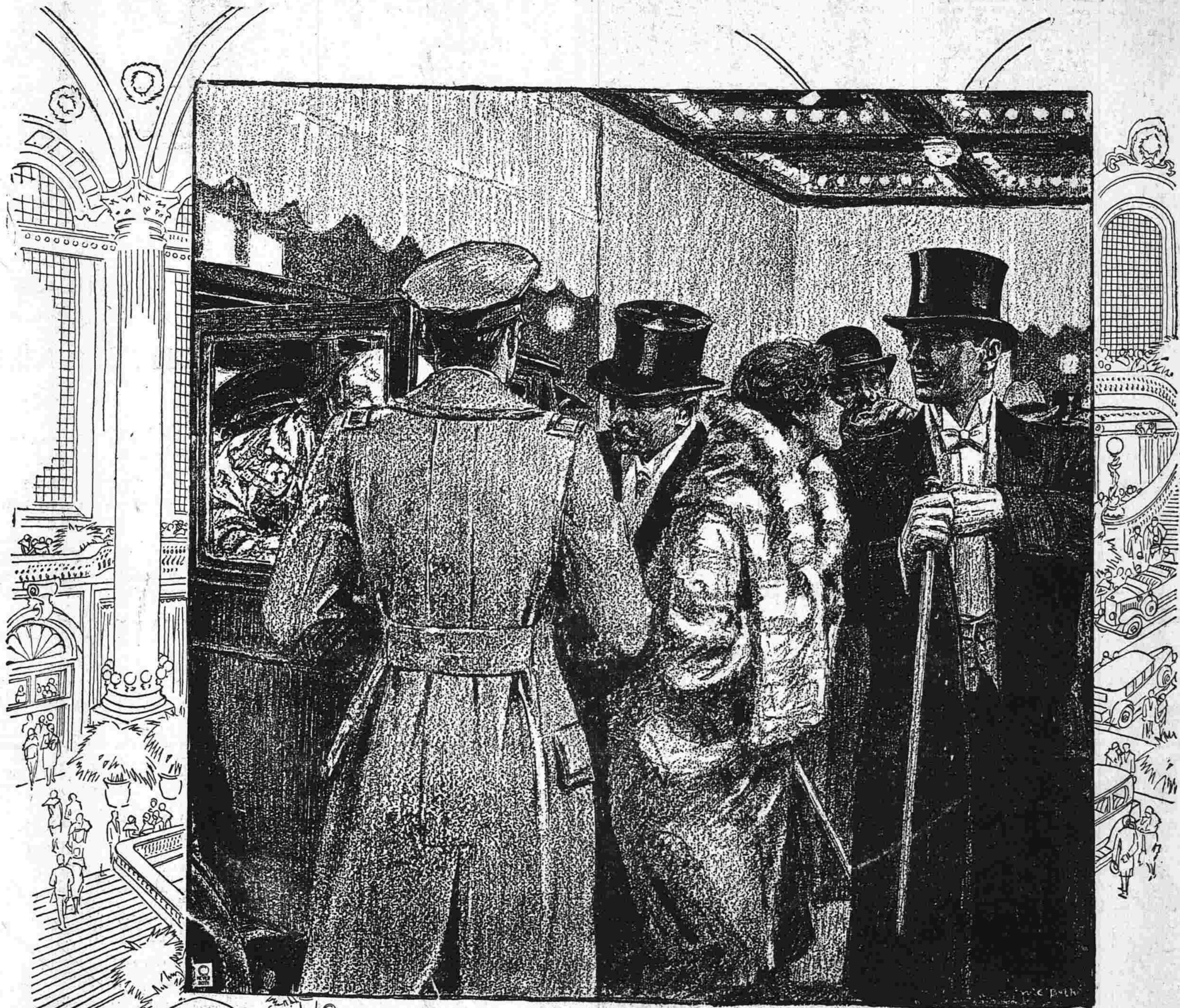
LOANS Let Us Budget You Out of Debt. Our Family Loan Service Will Solve All Your Money Problems. \$100 LOAN payable \$5 monthly, plus lawful interest. \$200 LOAN payable \$10 monthly, plus lawful interest. \$300 LOAN payable \$15 monthly, plus lawful interest.

ARE THEY HAPPY? What human (ages 2 to 100) isn't happy when they get plenty of Manchester Dairy Ice Cream. Doctors will tell you to eat all you want. Order it at your favorite soda fountain or neighborhood store. Manchester Dairy Ice Cream Co. Phone 525.





## MANCHESTER AUTOMOBILE SHOW



### EXHIBITORS

At the

Manchester Automobile Show

STATE ARMORY JAN. 30 and 31 FEB. 1 and 2

CAPITOL BUICK CO.  
CONKEY AUTO CO.  
MACHELL MOTOR SALES  
SCHALLER MOTOR SALES  
CRAWFORD AUTO SUPPLY  
MANCHESTER MOTOR SALES

H. A. STEPHENS  
GEORGE L. BETTS  
MADDEN BROTHERS  
GEORGE BROWN  
KEMP BROTHERS  
GEORGE S. SMITH

ALFRED A. GREZEL

**OAKLAND PIONEER  
IN ACHIEVEMENTS**

**Latest All-American Six Displays Novel Mechanical Advances.**

Building further toward its reputation as a pioneer of new engineering achievement widely adopted throughout the industry, the latest Oakland All-American six, displayed in seven body types at the Automobile Show, reveals mechanical advances that are sharing the limelight with its new and different body lines.

Just as in the past Duco finish, four wheel brakes, crankcase ventilation, the Harmonic balancer, tilting beam headlights with foot control, gasoline pump, and many other chassis improvements first appeared on the Oakland line, so the new car boasts more than fifty refinements, many of them exclusive to the car in its price field.

A quick mechanical picture of the new Oakland shows a larger and faster power plant, a new patented rubber engine support, new Oakland-developed internal expanding self-energizing four wheel brakes, larger cross-flow radiator, counter-balanced crankshaft, larger three-port intake manifolds, and unique lubrication of cylinder walls.

Interpreted in terms of performance, the new refinements mean quick vibrationless acceleration of iron ten to 25 miles an hour in six seconds flat, and a top speed of well over 70 miles an hour, according to tests under the spot watch at the General Motors Proving Ground, where the new car was made ready for the public.

Built on a 117-inch wheelbase, the new power plant develops 68 horsepower at 3,000 revolutions per minute. Cylinder displacement today is 228 cubic inches, increased from 212 cubic inches last year by enlarging the bore to 3 3/8 inches from 3 1/4 inches. Stroke remains at 4 1/2 inches.

The engine is the L-head type, with a high compression G-M-R head, pioneered by Oakland, which may be removed without interference with the ignition, and with provision for a built-in thermostat.

A feature of the head is the semi-circular baffle located directly above the piston which is claimed to give maximum freedom from detonation. Compression ratio is 4.9 to 1.

The power plant is mounted on four supports and insulated from the frame by rubber "biscuits," developed by Oakland engineers and exclusive to the latest All-American. The design of the "biscuit" is unique because it is impossible for a mechanic to change the compression of the rubber, no matter how hard he draws down on the fastening nut.

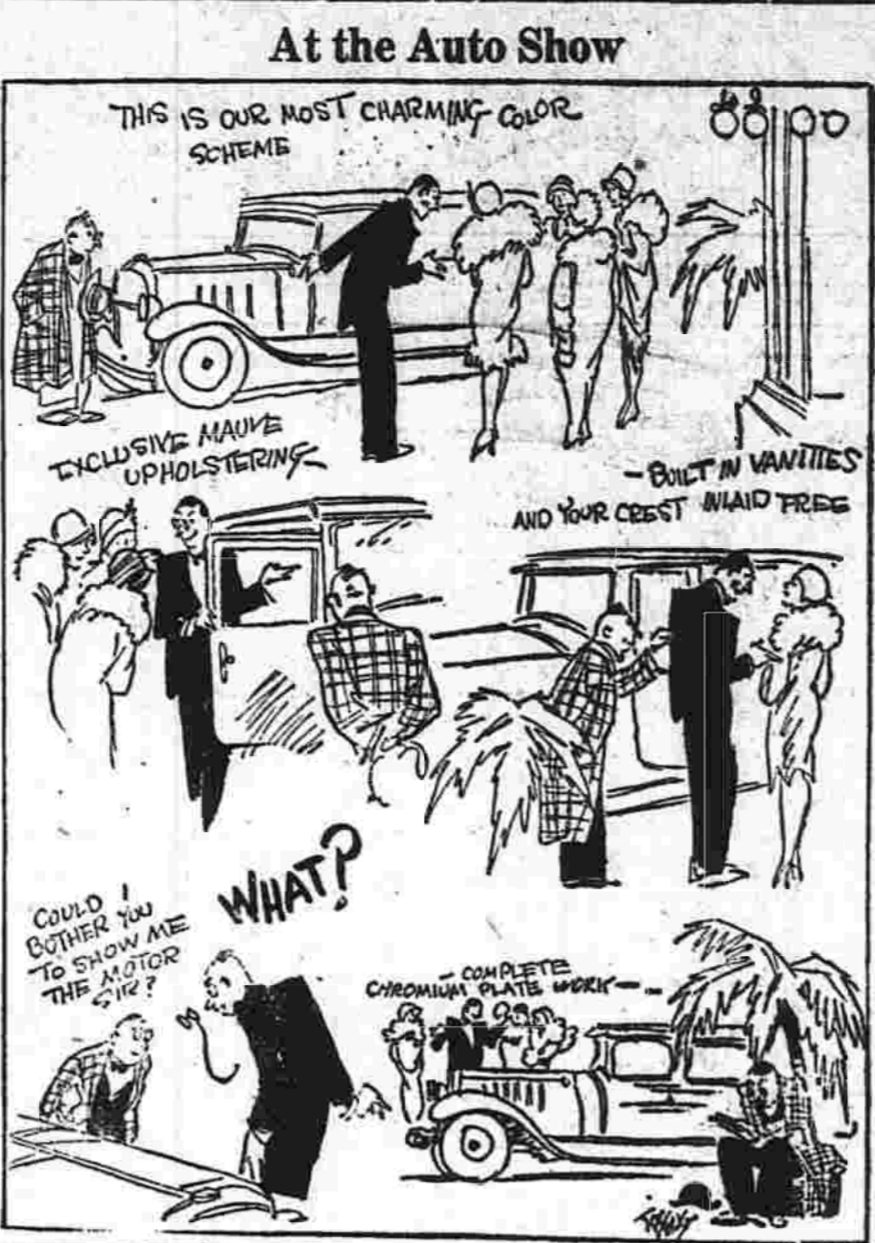
By decreasing the size of the hexagons in the new copper core of the cross-flow radiator, increased cooling is provided, while thermostat control has been an Oakland feature for the past few years. The Oakland pioneered cross-flow principle of radiation has special value in winter driving because it reduces evaporation and allows for efficient operation with the water level at only two-thirds the height of the radiator core, thus lowering the possibility of freezing.

A new and larger vertical type carburetor has an accelerator pump and economizer. The improved intake manifold is of the three-port type, with riser heated by the exhaust from all six cylinders, and a heat control valve so located as to carry excess heat away from the driver's compartment.

The larger oil pump circulates 200 gallons of oil an hour at normal road speed as against 120 gallons in the old pump. The AC gasoline pump and fuel filter combined in one unit is used, while the new AC air cleaner consist of copper ribbons moistened with oil, and is said to provide practically 100 per cent air cleaning, reduce fire hazard and effectively muffle carburetor hissing.

A pressure feed, of special design known as the regulated constant flow type, provides oil to the main, connecting rod and camshaft bearings. To insure adequate lubrication of cylinder walls, pistons and pins at all times, an ingenious plan has been devised whereby a cross groove in the bearing registers with the oil hole in the crankshaft and with notches in both ends of the bearing. Oil is sprayed on the cylinder walls through these end notches.

LABOR GETS HALF  
An analysis of California road costs recently disclosed that a little more than half the total cost of new improved roads goes for labor.



**TWO BROTHERS HOLD  
REUNION IN PRISON  
AFTER MANY YEARS**

Lincoln, Neb.—Two brothers, separated twenty-five years ago upon the death of their parents in New York, have been re-united behind the cold gray walls of Nebraska penitentiary.

William Townsend of Council Bluffs, Ia., through newspaper advertisements and radio, has found his brother, Otto Williams, "doing time" in the state prison here.

Williams, who is serving one to seven years for grand larceny, was adopted by a Nebraska family in early boyhood and was given the name of his foster parents.

Townsend, anxious to help his

long-lost brother make a new start, has asked for a commutation of sentence.

**SET BRAKE STANDARD**

At ten miles an hour, automobiles should be capable of being stopped in 9.3 feet; at 15 miles an hour, 20.8 feet; at 20 miles an hour, 37 feet; at 25 miles an hour, 58 feet; at 30 miles an hour, 83 feet. This scale, California legislators will soon be asked to incorporate in the law regulating brakes.

**HIGHER THAN CAR FARE**

A nation-wide survey conducted by the American Automobile Association shows that it costs motorists 10 cents per mile to operate their cars. Last year the average motorist spent \$229 for operation and repair. Fuel and oil cost \$102.

**THE STYLE AUTHORITY  
IN ITS CLASS!  
NEW SUPERIOR Whippet**



**WHIPPET 4-COACH**  
\$335  
Coupe \$355; Sedan \$355; Roadster \$425; Touring \$475; Commercial Chassis \$465.

**WHIPPET 6-COACH**  
7-BEARING CRANKSHAFT  
\$695  
Coupe \$695; Coupe (with rumble seat) \$725; Sedan \$760; Sport De Luxe Roadster \$820 (including rumble seat and extras). All Willys-Overland prices f. o. b. Toledo, Ohio, and specifications subject to change without notice.

**GREATER BEAUTY, LARGER BODIES WIN  
PUBLIC APPROVAL AT NATION'S AUTO SHOWS**

With longer bodies—higher radiator and hood—graceful lines—rich, harmonious colors—sweeping one-piece full crown fenders—the new Superior Whippet definitely establishes an ultra-modern style trend for Fours and light Sixes.

faster speed, quicker pick-up and greater hill-climbing ability. Low consumption of gasoline and oil, and dependable performance, make this new car well qualified to carry on Whippet's unsurpassed reputation for operating economy and minimum service costs.

Mechanically, too, the new Superior Whippet furthers its distinguished predecessor's long lead over competition. A higher compression engine gives more than 20% added horsepower, effecting

Come in and see these new cars. A demonstration may be arranged at any time suitable to your convenience. An immediate order will aid in early delivery.

**"FINGER-TIP CONTROL"**



A single button, in the center of the steering wheel, starts the motor, operates the lights and sounds the horn. You can keep your foot always on the brake when starting or re-starting on a hill.

**WILLYS-OVERLAND, INC., Toledo, Ohio**

**FOURS SUPERIOR Whippet SIXES**

**MACHELL MOTOR SALES**  
91 CENTER STREET, SOUTH MANCHESTER

**Again  
BUICK  
leads in  
fine car sales**

Far surpassing any other fine car in total volume of sales!

Winning more than twice as many buyers as any other automobile listing over \$1200!

Such is Buick's phenomenal record for 1928. And this same overwhelming buyer-preference has greeted Buick year after year for more than a decade!

The public *knows* what it wants. The public definitely settles fine car leadership by selecting Buick!

**CAPITOL BUICK CO.**

JAMES M. SHEARER, Manager.  
Cor. Main Street and Middle Turnpike, South Manchester

WHEN BETTER AUTOMOBILES ARE BUILT . . . BUICK WILL BUILD THEM

**REO**  
FLYING CLOUD THE MASTER THE MATE

See Them at the

**AUTO SHOW**

One of the most interesting displays at the Manchester Automobile Show this year will be the Reo cars I am showing to individuals seeking the latest in motor car merit and refinement. Only after critical comparisons did I accept the local representation for the Reo, the car I consider the real Standard of Value in motordom. I place my reputation of many years in the automotive field behind the Reo and urge you to see the Reo, to ride in the Reo, to compare the Reo with any other car you may be thinking of buying.

Reo Flying Cloud the Mate has a wheel base of 115 inches and is priced from \$1375 to \$1520.

Reo Flying Cloud the Master has a wheel base of 121 inches and is priced from \$1595 to \$1995.

Both these cars have six cylinder motors and internal expanding hydraulic 4-wheel brakes which make it possible to use their full speed safely and with comfort.

**Guaranteed Service!**

A car is only as good as the consistent, comfortable and economical mileage it gives you on the road. That is what you buy a car for—to travel, travel, travel whenever the spirit moves. My personal guarantee of expert, courteous and prompt service goes with every Reo sold through my agency. We will keep your Reo rolling up mileage for you, not for one season but through several of them, until you are ready for another Reo.

I Sell Consistent, Comfortable, Economical Transportation

**George A. Brown**

Sales REO Service  
Telephone 869 10 COOPER STREET SOUTH MANCHESTER Telephone 869



**ROOMIER BODIES FOR WHIPPETS**

**Strike New Note of Quality and Style in Light Car Field.**

With the new Whippet Fours and Sixes newly designed, the Willys-Overland Company brings to the light car field two new lines of cars, more beautiful, speedier, longer and with roomier bodies, and strikes a decidedly new note of quality and style that promise to set a new and definite trend among automobiles selling in the lower price ranges.

Although these two new lines of light fours and sixes establish a position of quality leadership in their respective price class, the fundamental principles of original Whippet construction and outstanding mechanical features are retained.

The body design of the various models is characterized by outstanding style, beauty and smartness, entirely new to the low priced field, while sparkling color combinations add the finishing touch of quality.

The new radiator design is much larger and higher, presenting a smarter front view which gives an appearance of lightness and speed to the car. Fender wells in various of the models add distinctly to the quality touch.

The new design of the interiors, with their rich upholstery and quality fittings, provide more room for the driver and passengers with

ample width and depth of perfectly contoured seats to insure maximum comfort.

For more than a year, experimental work on the new Whippets has been conducted to definitely establish their ability for speed and power. These tests were conducted throughout various sections of the country and proved that the new models set a new high standard in the light car field and definitely outperform the original Whippet Four and Whippet Six, both in speed and hill climbing ability. The Whippet Four in numerous tests showed an increased speed compared with the original Whippet Four, while the Whippet Six tests proved it capable of maintaining a speed of 60 miles per hour and better.

Both cars which have been noted for their fast get-away and pickup, which is especially helpful in heavy city traffic, maintain this same fine performance rating.

This material improvement in the Whippet Four performance is due to certain refinements of the engine. The stroke has been increased by 3/8" and the compression ratio has also been increased, bringing it down to 18.6 percent. This, with a new manifold and larger intake valve, has produced an engine of decidedly more power and torque than that heretofore used. While the average maximum horsepower of 40.

No material change has been made in the Whippet Six engine other than to increase the compression ratio which increases the horsepower to 50 as against 45 in its predecessor.

The riding comfort of both the Whippet Four and Whippet Six have been materially enhanced, not only by the addition of 3 inches to the wheelbase but by a marked increase in front and rear springs.

Other features of comfort and conveniences in the new Whippets include "finger-tip control," which enables the driver to control the

operation of starting the motor, operating the lighting system and sounding the horn without changing his driving position; complete re-designing of the steering mechanism, which makes for less effort in steering the car, plus the advanced type mechanical four-wheel brake system which has proved so satisfactory in the past.

**RADIO TO ASSIST SHOW ORCHESTRA**

Alfred A. Grezel will supply radio entertainment at the Automobile Show with Grebe and RCA radio. It was decided by the show committee to select some radio dealer to supply entertainment during the periods that the orchestra was not on duty and so Mr. Grezel was selected. In addition to displaying radio Mr. Grezel will exhibit Kelvinator, the oldest electric refrigerator, NoKoi and Aetna burners, Lynn Range Oil burner and Sterling ranges.

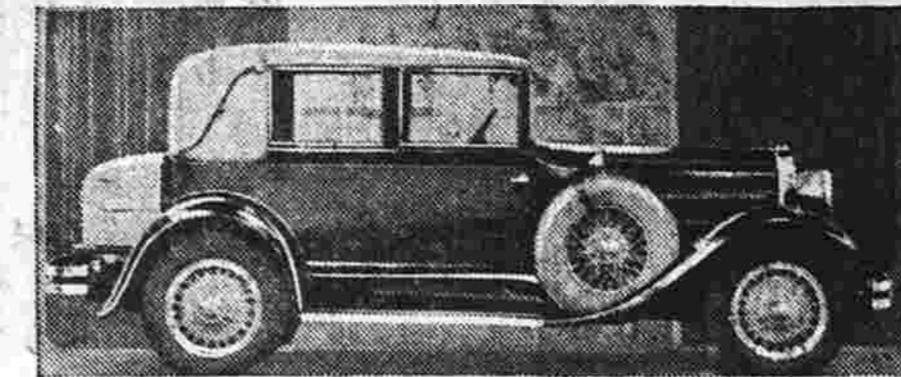
Mr. Grezel has just taken on the Kelvinator after thoroughly investigating the proposition. He says, that he is confident that it will be a big seller in Manchester. He is planning to push the sales of this, the oldest domestic electric refrigerator, in Manchester and vicinity.

He has been agent for NoKoi and Aetna oil burners in Manchester for a number of years and has made a fine record. Sales of these burners lead in this town as in all other towns and cities.

Mr. Grezel has sold the Sterling ranges in Manchester for a number of years also. They are a well made range and come finished in a variety of colored enamels.

The Lynn oil range burner now on demonstration at his store is ideal for home use.

**Modishness Marks Greater Hudson Victoria**



The Greater Hudson Victoria is this year redesigned to embody larger seating capacity and the modishness of the new Hudson-Exeter lines. It will have all of the engine improvements giving greater power and speed, more nearly complete carburetion and hence less gasoline consumption.

In the Greater Hudson—as the larger of the two cars built by the Hudson Motor Car Company is now called—the two-chassis idea has been retained and elaborated into an interesting variety of bodies, mounted on a standard chassis and a long chassis, the former being 122 inches and the latter 139 inches. Although the two chassis carry different bodies, their salient mechanical features are the same.

The wider variety of body choices is given to the standard chassis which comes with nine bodies, namely:—roadster, phaeton, coupe, convertible coupe, coach, victoria, standard sedan, town sedan and landau-sedan. The 122-inch convertible coupe is an interesting addition to the line, offering the seclusion of a coupe body which in a few moments, with the aid of disappearing windows, may be converted into an open model with top down.

A model which shows a number of interesting changes is the victoria. The former sloping back with folding lid has given way to straighter lines, permitting the placing of a trunk of original and harmonious outlines. Changes appear also in the seating arrangement of

4 inches longer and 3 1/2 inches wider than their immediate predecessors. While there is, in consequence, more leg and elbow room, nothing intrudes on the slender grace that is the dominant note of the body contours.

**CUTOOTS OUT**

Since Jan. 1 muffler cutouts have been illegal in California. They must be sealed in such a way that they cannot be used, or the driver is liable to arrest.

**EXPENSIVE MOVE**

Fully half the buildings in Falls would have to be moved if streets were to be widened to the width they should be to accommodate the city's traffic. Police Perfect M. Jean Chiappe believes.

**WILLARD Radio Rentals Auto SERVICE STATION Batteries Recharged Telephone 15 Radiator and General Repairing OLIVER WELDING WORKS Corner Pearl and Spruce Tel. 1235**

**Auto Insurance** **Auto Insurance**

**Who's at fault?**

LET OUR OFFICE QUOTE YOU RATES before securing

**AUTOMOBILE INSURANCE**

WE represent the best of stock and dividend payment companies that are non-assessable.

**HOLDEN-NELSON Co., Inc.**  
853 MAIN ST. TEL. 2110 SOUTH MANCHESTER  
"MANCHESTER'S LARGEST CASUALTY AGENCY"

ANNOUNCING THE NEW

**PONTIAC BIG SIX**

Introducing Big Car Standards of Luxury, Style and Performance at \$745.

TODAY a new type of low cost motoring luxury is available. It embraces big car style. It provides big car riding comfort. It embodies big car quality in unseen parts. It includes big car performance even to the point of developing big car power and traveling at big car speed. It is offered by a brand new automobile—the New Pontiac Big Six.

The Pontiac Big Six represents more than a new assembly of gears and gadgets. Of course, some people delight in specifications. Pontiac's new specifications will open their eyes. But these specifications are only a fraction of what the Pontiac Big Six brings into the picture. They fail to hint at the luxury, the beauty and the pride of ownership upon which Pontiac's Appeal to the American public is based.

Frankly, the New Pontiac Big Six was designed to appeal to a certain group. True, every motor car owner in America will find in it many things to admire.

Two-car families will find it an ideal second car. But the group for which it is primarily intended is made up of people who are beginning to move up in the world. Their wants are enlarging. Their ideas of beauty and luxury are growing. Many of them will soon make the first important step up in the quality of their cars. The New Pontiac Big Six was designed for them.

These up-and-coming Americans are continually on the lookout for new, more arresting style. The Pontiac Big Six comes to them entirely new in appearance. Stunning new bodies by Fisher contribute to the big car beauty and big car style presented by the car as a whole.

Progressive people are seeking greater luxury. The Pontiac Big Six offers them the luxury, the deep, richly upholstered cushions and the charming appointments for which bodies by Fisher are famous the world over. It provides the smooth-riding qualities of a car 167 inches in overall length, with accurately balanced rotating mechanical parts and such advanced comfort features as adjustable drivers' seats.

Forward-looking Americans can be satisfied only with a car that comes close to mechanical perfection. Let's see how this great new Pontiac meets this particular demand.

It is a six, but more than just a six. It is a six with the added power of a larger L-head engine and the added smoothness imparted by a dynamically balanced, counter-weighted crankshaft and the famous Harmonic Balancer. It is a six with the added efficiency and silence achieved by means of the G.M.R. cylinder head. It is a six with the added cold-weather advantages provided by the cross-flow radiator, thermostatically controlled.

From fan to rear axle, its "line of drive" is in accurate dynamic balance. Its new brakes are of the internal expanding four-wheel type which neither mud nor rain nor ice can prevent from operating efficiently.

As for its performance, you can drive it at express train speed. You can watch it accelerate alongside the finest cars on the road. You can test its power under any conditions, confident of its ability to pull through. Meanwhile it continues to provide that unmatched dependability for which every Pontiac since the first one has been famed.

Only a few high lights in its construction have been mentioned. Just enough to prove that the Pontiac Big Six is entirely new and capable of meeting progressive Americans' demand. But the amazing thing about it is that it gives so much big car luxury, style and performance at prices which come within practically everyone's reach!

Prices \$745 and up, f. o. b. factory, plus delivery charges. Bumpers and rear fender guards regular equipment at slight extra cost. Check Oakland-Pontiac delivered prices—they include lowest handling charges. General Motors Time Payment Plan available at minimum rate.

SEE THIS GREAT CAR AT THE AUTO SHOW.

**KEMP BROTHERS**  
130 Center Street, South Manchester

**Chrysler NOW makes available**

**the New FULL SIZE PLYMOUTH**

**at New Lower Prices**

A Chrysler Motors Product

**655 AND UPWARDS**

|  |       |
|--|-------|
| Coupe . . . . .                            | \$655 |
| Roadster (with rumble seat) . . . . .      | 675   |
| 2-Door Sedan . . . . .                     | 675   |
| Touring . . . . .                          | 695   |
| De Luxe Coupe (with rumble seat) . . . . . | 695   |
| 4-Door Sedan . . . . .                     | 695   |

All prices f. o. b. Detroit. Plymouth dealers are in a position to extend the convenience of time payments.

**New Lower Prices—with Quality Unchanged**—are focusing public attention on Plymouth and winning even more enthusiastic recognition of its outstanding dollar-value.

Comparing the Plymouth with other cars at its price, people are convincing themselves it offers greater intrinsic value and lasting economy.

**Economy with Full-Size:** Buyers are turning to this car in ever-increasing numbers because in point of size and seating space, it overshadows every other offering at its price—is the outstanding full-size car in the lowest-priced field.

**Economy of Operation and Upkeep:** It is obvious that Plymouth has all the economy advantages of a simple, sturdy four-cylinder engine, resulting in substantial savings in gas, oil, tires and freedom from upkeep expense.

**Economy with Modern Engineering:** Designed by Chrysler it embodies all the recognized advantages of modern engineering including such important developments as rubber engine mountings, aluminum alloy pistons, large main bearings, torque reaction neutralizer and positive pressure-feed lubrication.

**Economy with Power and Safety:** It is a joy to drive the Plymouth—to note its typical Chrysler alertness, responsiveness and smoothness of performance—to feel the positive safety of its hydraulic four wheel brakes (internal-expanding, front and rear) which are found on no other car near the Plymouth price.

See the Plymouth! Drive it. You are bound to recognize the wisdom of popular judgment in rating it the biggest value and the soundest economy among cars selling under \$850.

All Plymouth models on display at the Automobile Show and at all Dealers' Showrooms

**GEORGE S. SMITH**  
30 BISSELL STREET, SOUTH MANCHESTER

**PONTIAC A LUXURY  
IN LOW PRICE FIELD**

**Bigger and Smarter Model  
for 1929—Is Now Called  
a "Big" Six.**

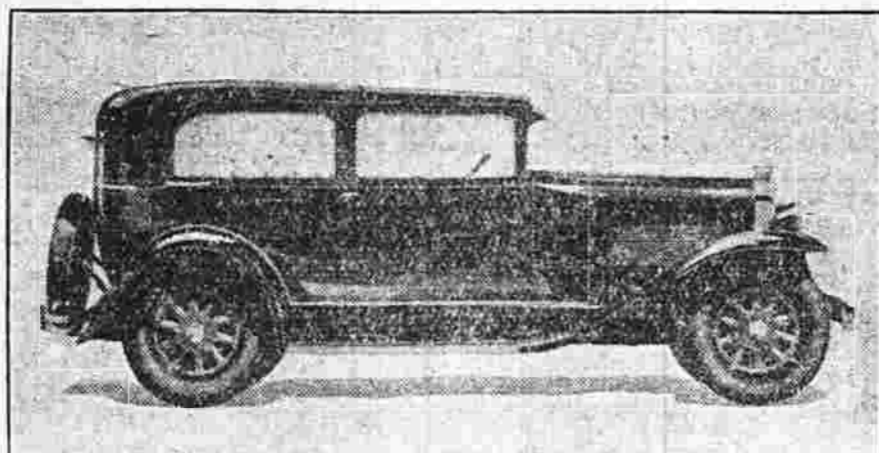
Truly a luxury car in the low price field, the Pontiac Six for 1929—bigger, feeter and smarter—is displayed in the complete line of seven-passenger models at the Automobile Show.

Heralded as a "big" six, the new Pontiac measures up to its name by offering a wide and flexible performance range, and distinctive Fisher bodies styled to please an exacting public.

The new line provides not only new body lines, but a car almost entirely new. Major features of the chassis and body all have been redesigned or enlarged to bring the car, in performance and smartness, into the big car field.

An engine more powerful than a year ago, with 200 cubic inches of cylinder displacement and developing 57 horsepower; the addition of a harmonic balancer and counter-balanced crankshaft; larger valves, manifold and carburetor; sturdier rear axle; redesigned transmission assembly; and new Hotchkiss drive

Will Win Many Friends.



NEW PONTIAC BIG SIX 2-DOOR SEDAN

with two universal joints are among the chassis improvements that make possible quick, vibrationless acceleration and high top speed.

In the beautiful new longer and wider bodies, craftsmen of the Fisher corporation working in conjunction with Oakland engineers have wrought a unique arrangement of lines and unusual style touches that give the finished car an appearance totally unlike any other now on the road.

A full side view shows to best advantage the striking lines of the new car. A new, pleasing concealing moulding starting at the cowl and completely encircling the body, and a high waistline effect, distinguish the Fisher bodies. This moulding is not continued down the hood as in the Oakland models, but a new curved pillar line, quite similar in appearance to one of America's costliest cars, runs from

the center panel on the cowl down to the rear of the hood.

A smart new louvre grouping sets the car instantly apart in traffic. Instead of, in the conventional manner, louvres all are grouped in one panel and extend horizontally across the hood.

The Fisher closed bodies all have adjustable driver's seats, smart new sun visors of all-metal construction, tilting beam headlights operated by foot control, ebony-finish instrument panel with individual mounting and illumination by two shielded bulbs, smart elliptical windows in rear, slender, ebony-finish steering wheel and deep luxurious upholstery in solid colors harmonizing with the new and beautiful exterior Duco combinations.

All exposed bright parts carry a brilliant chrome-plated finish. Among such fittings are a cowl bar mounting two parking lamps, large

er hub caps, radiator shell and vertical center bar, head and tail lamps, top hood hinge, and radiator and gasoline tank filler caps.

The proven cross-flow radiator, with its anti-evaporation tendency, first introduced to the public just a year ago on the 1928 Pontiac Six, is retained this year, with the core redesigned to conform with the new high narrow arch of the chrome-finished shell. A chrome-plated bar extends vertically in front of the center of the car. Water control by a thermostat built into the cylinder head also is retained.

A unique feature of the new car is the absence of a name plate in the conventional position on the radiator shell. While the familiar "Chief Pontiac" emblem is still carried on the radiator filler cap, the name of the car nowhere appears except on the specially designed running board mats.

On all models form-fitting spring covers which, by keeping dirt from contact with the metal assure freedom from squeaks and easy riding; four Lovejoy hydraulic shock absorbers, and front bumpers and rear fender guards are regular equipment at slight extra cost.

**AERIAL ROADS**

Elevated highways, like huge suspension bridges running across roofs and open squares, will soon be built in Paris to relieve traffic conditions. Spiral roadways built around huge pillars will provide access to the aerial highways.

"Is this dance formal, or can I wear my own clothes?"

**FIVE REASONS FOR  
PLYMOUTH SUCCESS**

**Large Size, Appearance,  
Performance, Careful  
Building, Modest Price.**

Five factors, in the opinion of J. W. Frazer, Plymouth sales manager, are responsible for that car's success. These are its economy and remarkable performance capacity, large size, distinctive appearance and luxury of appointments, the care with which it is built under Chrysler's famous Standardized Quality principle, and its extremely modest price.

It is the most economical in operation, largest, roomiest and most comfortable among all cars of lowest price.

Mr. Frazer is authority for the statement that the Plymouth, with its entirely new developments both in body and chassis design, is revolutionizing that entire field just as the original Chrysler cars of 1924 have since revolutionized the whole motor car industry. It is his conviction that no value its equal has ever been produced in the low-price field.

**Most Economic Engine Type**  
It is literally a car amply large to accommodate five adult passen-

gers in comfort," he continues. "The Plymouth-type engine is the most economical ever produced. Its performance capacity is such that it operates smoothly at every speed up to its maximum, which, with the roadster, is well in excess of 60 miles an hour. It is the only car among those of lowest price equipped with the safety factor of internal expanding hydraulic four wheel brakes, with their consequent freedom from dirt, dust and water.

"It is completely finished in detail, including many draft prevention devices. Its engine is thoroughly insulated against the transmission of body shocks, caused by rough roads. It is standard equipped with the 'Silver Dome' high compression principle, which combines with high compression an ability to produce, from any grade of gasoline and extracts from each grade more in power, hill climbing ability, speed and acceleration than has hitherto been considered possible."

Its other features, also new to the lowest-price field, include body impulse neutralizer, amazing handling ease at every speed under any condition, slender grille radiator, arched window silhouette, "air-wing" fenders and many other innovations that serve to emphasize its unusual dollar value.

**Great Value Vita!**

"The Plymouth," stresses Mr. Frazer, "is the only car of lowest price to offer many other features. With each passing year the public looks for improved products and more attractive values. We appreciate that this has been especially true in the low-price field, in which there has been an obvious need for

a finer, smarter car. The Plymouth yields results that you simply won't believe possible in a car of such price until you actually experience them for yourself.

"Literally, it is making over the whole fabric of the low-price field. Its designers have employed the bold strokes necessary to a wholly modern creation, combined with the genius to utilize the subtle, tasteful touches the public demands

and has the right to expect. Chrysler quality principles insure that every rotating and reciprocating part is in perfect balance before assembly. Fine precision methods insure that the owner actually receives the performance its engineers designed into the car.

"It is utterly unlike any other motor car at anything like its price."

**INSURE WITH  
LAPPEN**

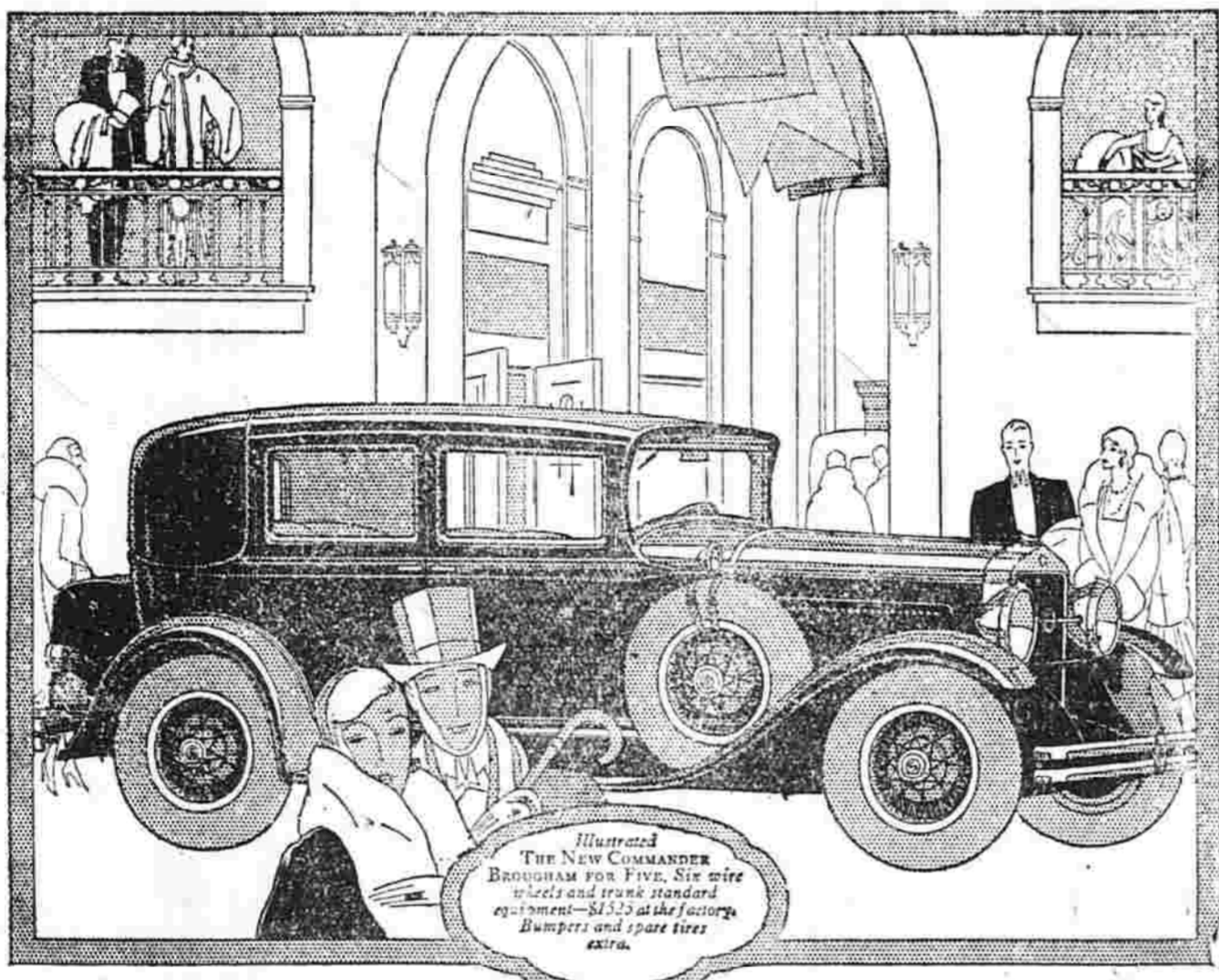
**Every Motorist Has His Day  
You May Be Next**

If you drive your car with no insurance or if you drive without being properly covered with insurance, you are inviting disaster or serious loss.

If you carry no insurance and even if you have no estate, a judgment may be executed against any property or funds you may acquire during a long period of time.

Is it worth the risk involved? You may be ever so careful but don't forget that every motorist has his day, sooner or later.

**INSURE NOW WITH  
John H. Lappen**  
All Forms of Insurance.  
19 Lilac St. Tel. 1800



**A NEW AND FINER COMMANDER  
at a still lower price!**

STUDEBAKER introduces the greatest motor car ever built and sold at its price—a new and still finer edition of the world-famous Studebaker Commander!

Worthy heir to the many laurels of its gallant predecessor which traveled 25,000 miles in less than 23,000 minutes, this new Commander is even finer, more brilliant in performance, more beautiful in line and curve and color. Yet its price, reflecting the savings of Studebaker's unique One-Profit manufacture, is lower than ever!

The new Commander is easier riding, more comfortable in seating, steadier on the road at high speed. Studebaker's new ball bearing spring shackles, larger hydraulic shock absorbers, wider, deeper cushions and

**\$1350**  
at the factory

lower, double-drop frame provide supple, pliant travel-ease. Safety steel-core steering wheel, non-shatterable windshield and smooth amplified-action brakes enhance your safety. New carburetion, new manifold, new sureness of starting in cold weather—these are typical refinements of these superb cars.

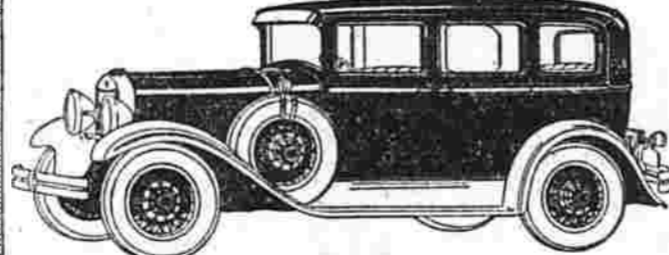
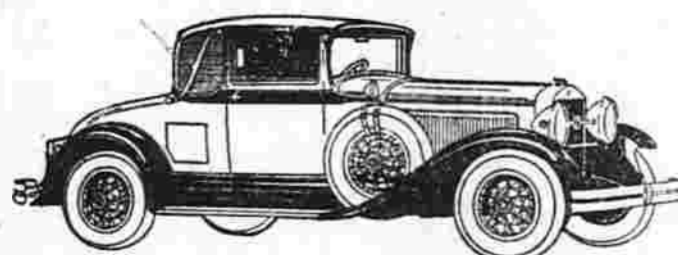
New color themes, new smartness, new power and good manners, characterize each of Studebaker's four great lines of motor cars, which hold every official record for speed and endurance. World Champion President Eight, New Commander, Dictator and Erskine Six—each offers performance, comfort, appearance, outstanding in its price class. Each is a champion—and a Studebaker. There are no finer motor car credentials.

**STUDEBAKER**

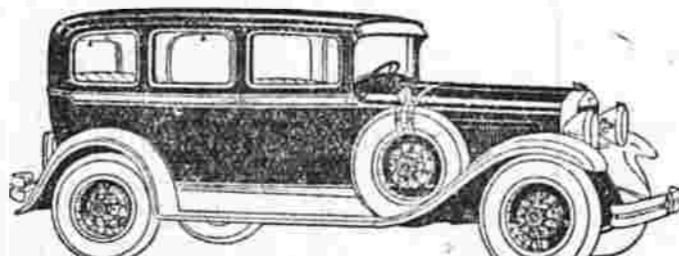
Builder of Champions

(Below)

**Dictator Royal Sedan for Five—\$1395.** Champion of its price class—hydraulic shock absorbers—ball bearing spring shackles—6 wire wheels and luggage rack standard equipment. Other Dictator models from \$1265. Prices at the factory.



**NEW PRESIDENT EIGHT CONVERTIBLE CABRIOLET FOR FOUR—\$1895.** Folding top converts this smart closed car into an open roadster. Rumble seat. Six wire wheels and luggage rack standard equipment. Hydraulic shock absorbers. Other President models from \$1785 to \$2575. Prices at the factory.



**ERSKINE ROYAL SEDAN FOR FIVE—\$1045.** Finest, fastest car under \$1000—official A. A. record of 1000 miles in 984 consecutive minutes—six wire wheels and luggage rack standard equipment—hydraulic shock absorbers. Other Erskine Six models from \$835. Prices at the factory.

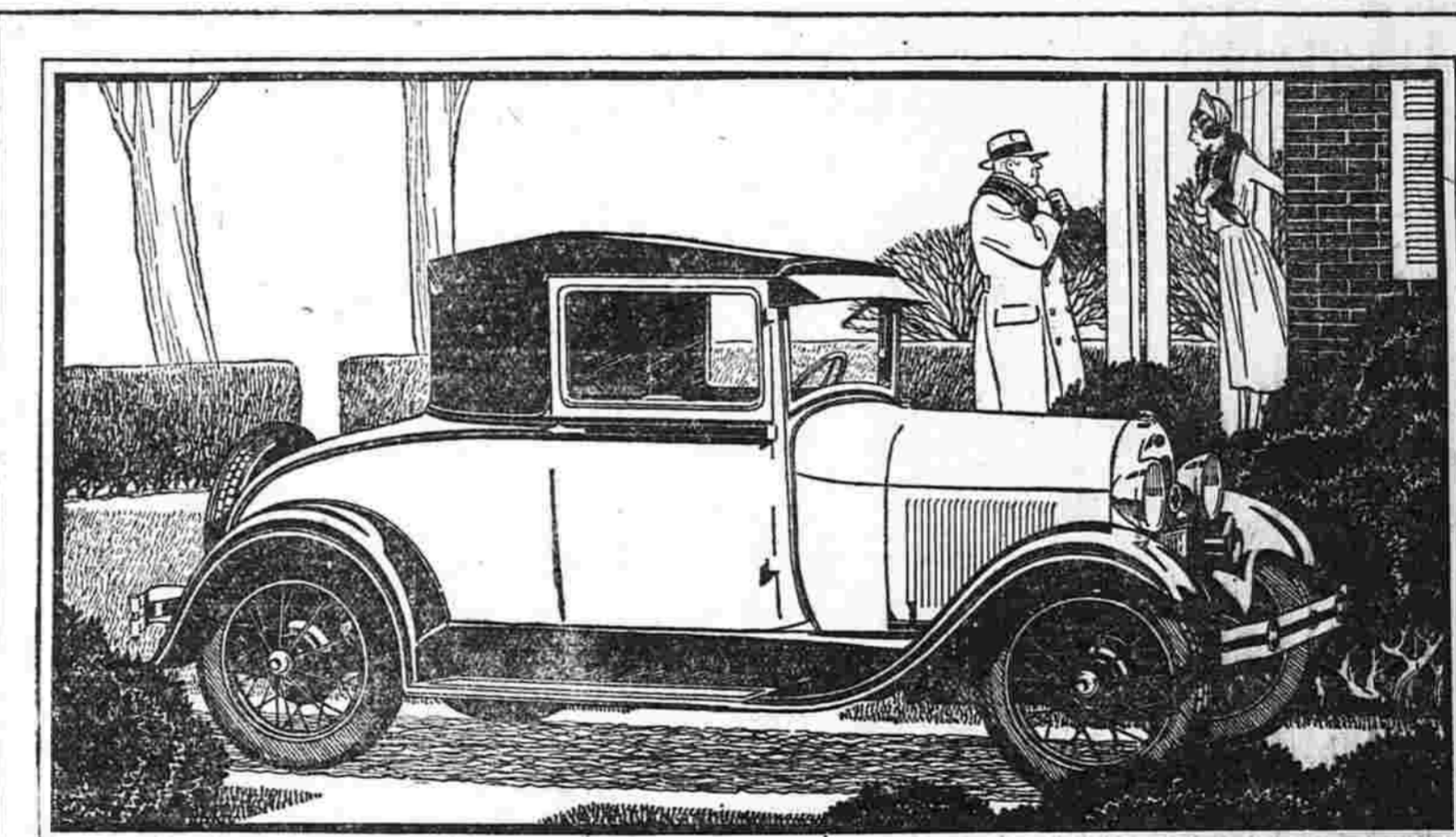
**THE CONKEY AUTO CO.**

20 EAST CENTER STREET,

SOUTH MANCHESTER

**THE NEW FORD**

is at the Automobile Show  
**STATE ARMORY, MAIN ST.**  
Jan 30-31 and Feb. 1-2



**Value of simplicity of design shown  
in smoothness, acceleration, speed,  
power, reliability and economy  
of the Ford engine**

The engine of the new Ford represents an important development in automobile engineering. It is unique in design and performance, giving unusual acceleration, smoothness, speed and power without sacrifice of reliability and economy. Ford engineering has found the way to include every essential feature of good performance without the necessity of a high-speed, complicated motor.

gasoline feed, the specially designed carburetor, the new hot-spot manifold, the carefully planned large valve diameter, the chrome silicon alloy valves, the aluminum pistons, the statically and dynamically balanced crankshaft and flywheel, and the simplicity of the electrical, ignition, cooling, lubrication and fuel systems.

The construction of the cylinder head is just one factor in this performance. Others are the new vibration absorbing engine support, the direct gravity

Come in and inspect every detail of this truly remarkable engine and then arrange for a demonstration ride. You will know then that there is nothing quite like the new Ford anywhere in design, quality and price.



**Manchester Motor Sales**

1069 MAIN STREET,

SOUTH MANCHESTER

## Vast Changes In Autos In The Past Five Years

BY ISRAEL KLEIN

Science Editor, NEA Service  
Five years is rather a short time in the life history of a great industry, but the last five years stand out like 50 in the advancement they have brought to the automobile.

This comparatively short time has seen the automobile transformed from a mere medium of transportation to a veritable parlor on wheels. It has seen the small eight come into use, the six become more popular and the four wane in appeal to the public. It has seen the European type car come and go—tried and found wanting by a comfort-loving public.

In this short period, some 60 makes of automobiles dropped by the wayside, while only 15 new ones came into being. Of the 60 "orphans" some were replaced by more improved models under the same names, but the great majority of them will be heard of no longer. The expansion of the industry, of the nation-wide adoption of the automobile, of the advent of the two-car and finally the three-car family, and of the widespread beneficial effect upon other industries and prosperity in general—these are so obvious that they need not be dwelt upon here. Perhaps more interesting would be a comparison of the automobile of five years ago with that of today, in order to show how far the motor car has advanced mechanically in this time.

**Many Changes in Short Time**  
Let us review some of the high points in this comparative analysis. In the last five years we note the general adoption of—

- Four-wheel brakes.
- Balloon tires.
- Pyroxylin finish.
- The all-steel body.
- The high compression head.
- The air cleaner, fuel cleaner and oil filter.
- Bonnet, invar strut pistons.
- Rubber engine suspension.
- Chromolun plating.
- Double-beam, fixed focus headlights.
- Safety glass, single piece windshields.
- Higher power and speed.
- Longer wheelbase and lower body lines.
- Full pressure lubrication.
- Wider, roomier bodies.
- Increased visibility, due to narrower front pillars.
- Double drop frame construction for a lower body.
- Cross radiation.
- and many more improvements hardly secondary to those enumerated. Everything, big enough by itself, was only a meager part of the over-all development of the automobile.

**Had to Buy All "Extras"**  
As a result we have today a motor car sleek, swift and safe, much easier to drive than it used to be and far more comfortable for the passengers.

In the beginning of 1924, automobiles were sold at the factory price without the accessories that go with them today—rear-view

mirror, windshield cleaner, bumpers, shock absorbers, sun visor and so on. Such additional features as oil filter, air cleaner and fuel cleaner were unknown then, while today they are integral parts of the car.

The motorist of 1924 had to buy an extra motor heat indicator which he gets today on the dashboard in front of him. He had to worry about the sudden overheating of the engine because of the lack of thermostat which is part of nearly every automobile sold today. He had to climb out behind to see how much gas he had in the fuel tank—another inconvenience eliminated by modern ingenuity.

**Motor Makes Big Advance**  
Five years ago, the automotive engine was far from the advanced product it is today—although today's still has some for the best that can be obtained from it. Yet, in these short five years, the motor block has been cast in a stronger alloy, the pistons have been made of more powerful material rather than mere cast iron, the valves have been strengthened and arranged so that greater power, smoother performance and additional fuel economy may be gained from the motor's operation.

In addition, a torsional balancer has been added to the crankshaft in order to reduce engine vibration. This main shaft, the camshaft, piston rods and wrist pins have been drilled through so that full pressure lubrication over all moving parts may be effected on the average automobile. The entire engine has been suspended on rubber and all its moving parts more finely balanced to afford much smoother operation than we experienced five years ago.

So great has been the progress in engine construction that today several of the makes of cars can be driven directly out of the factory at a speed up to 40 miles an hour. Less and less are dealers cautioning buyers of new cars against driving past 25 miles an hour for the first 500 or 1000 miles.

**Body Designers Take a Hand**  
Even greater, as an improvement in the 1924 automobile than the engine, is the body. Five years ago saw the beginning of a pronounced change in popularity from the touring car to the sedan. Body designers weren't ready for the change, so they merely slapped an enclosed frame over the old style of chassis and let it go at that.

Today both body and chassis designers get together and devise a motor car not only comfortable to ride in, but pleasing to the eye. Bodies have actually been lowered, thanks to the double drop frame which permits this. The body has been widened a few inches, thanks to the all-steel body. And greater comfort has been gained inside, thanks to the adjustable front and rear seats.

From the outside looking in, the car has gained that sleek, speedy appearance from such expedients as lengthening the wheelbase, lowering the body into the chassis, widening the body molding and carry-

### A Blemished Record



THE OLD TIMERS  
CATCH THE APPRENTICE  
CLEANING OFF A GREASY  
STEERING WHEEL

ing it the entire length of the car, lengthening and at the same time lowering the windows, raising the radiator and hood to the level of the molding, rounding the top in rear and carrying it well forward, and finally reshaping the fenders and mudguards into single-piece full crowned type that become more closely a part of the body proper.

**Driver Gets More Comfort**  
From front, the body is made to appear just as speedy by the longer and narrower radiator and by the tendency of shaping everything in front back into the lines behind. This is quite a departure from the pudgy, tacky lines of the 1924 automobile.

Today the driver has received more attention than ever for his comfort and ease of driving. Facilities have been given him in order to relieve him of all the worries he used to have five years ago to keep the car going properly.

The adjustable steering wheel, adjustable pedals and adjustable front seat look to his comfort. The non-shatterable windshield, narrow front pillars and double windshield wiper look to his safety. And such little gadgets as an automatic choke control, motor, gasoline and oil gauges on the dash, foot-switch for headlights, a universal steering wheel button for horn, starting and lighting and an automatic carburetor "booster" for quick acceleration help make driving so much easier than it used to be.

Add to all this the fact that prices have come down considerably, besides the fact that these prices include everything needed on the modern automobile, and we may realize how far we have advanced in five short years.

**MORE CARS IN POLAND.**  
The registration of 21,922 motor vehicles in Poland, represents an increase of 27 per cent over the number at the beginning of 1927.

**ROADS EXCEED RAILS.**  
The 3,000,000 miles of highways within the U. S. borders exceed by four times the mileage of railroads.

### WILLYS-OVERLAND HAS BIG EXPORTS

Shipments Increase 31 P. C.;  
Greater Expansion Is Expected.

Toledo.—The Willys-Overland Company broke all its previous export sales records during 1928.

Shipments to foreign countries during the year totalled 36,698 cars as compared with 27,592 during 1927 or an increase of 9,106 units or 31 per cent. Many of the European and Asiatic countries showed a much larger increase in percentage but the average was well over 25 per cent.

The company has been steadily increasing its foreign business for years. President Willys said that preparations are being made for increasing export business during the

new year by 40 per cent over the record-breaking shipments of 1928. The company has greatly increased its dealer organization abroad in addition to development of manufacturing plants in Canada, Great Britain and Germany.

Countries which showed the largest increases during the year include: Argentine, Brazil, Chile, Japan, India, Spain, Australia, Java, Sweden, South Africa, New Zealand and England. The big season of automobile buying is just beginning in Argentine, Australia and New Zealand and the company's dealers in these countries are ordering larger quantities than ever before and have cabled their confidence that from 35 to 40 per cent more cars will be sold in these countries during the next six months than in the corresponding period of 1928, Mr. Willys said.

First complete figures of foreign sales by Willys-Overland during 1928 showed that the company increased its sales in Great Britain alone by 85 per cent over the preceding year. This compares with an export increase by the rest of the industry of approximately 25 per cent. During the year American manufacturers sold about 800,000

cars abroad as compared with 643,000 units in 1927. Willys-Overland dealers in foreign countries report a big increase in demand for closed cars. In New Zealand this year the closed car is dominating the market although in Australia the open car is still in favor, these dealers report.

The first typewriter, for which it was claimed that "it could print almost as fast as one could write with an ordinary pen," appeared just 100 years ago.

**SEEKS FREE DUTY.**  
The American Automobile Association is seeking an amendment to the Tariff Act under which change American motorists, buying cars in foreign countries, would be allowed to bring them into the United States free of duty.

**ROAD COST LARGE.**  
The cost of constructing all the highways in the world during 1928 cost more than \$2,660,000,000. Of this amount, \$1,360,025,776 was spent in the United States.

#### NOTICE TO OUR BUICK OWNERS!

If you want to keep your car looking new we can make it so by our process of Simolizing.

By this process it will make old cars look like new and will also protect the paint from the weather.

If your car needs attention in any way such as valves, carbon, brakes and adjustments that are necessary we will gladly take care of your wants.

We are here to take an interest in your car.

"Our Motto is Service and Satisfaction."

**CAPITOL BUICK CO.**

Tel. 1600 285 Main Street J. M. SHEARER, Manager. Tel. 1600

## Fayette B. Clarke AUTOMOBILE INSURANCE

RELIABLE COMPANIES

PROMPT CLAIM SERVICE

Telephone Manchester 292-2

10 Depot Square

# ESSEX THE CHALLENGER



NO EVADING THIS CHALLENGE

76 ADVANCED FEATURES

Here is a challenge that rings with fulfillment. Its bid is to all who would own the best, and no car is excepted.

In Fast Getaway—against the champions of any price class. In Speed—anything the road offers up to 70 miles an hour. In Endurance—60 miles an hour all day long is being proved by thousands. In Hill-climbing—give it the hardest task you know. In Size and Roominess—match with big cars of large passenger capacity. In Appearance and Smartness—compare it with the costly cars, in which high price is paid for just those things. In Economy—against small light cars, whose chief appeal is economical operation, and which do not contend for performance distinction.

By tens of thousands motorists are accepting the Essex challenge in demonstration tests that decisively prove fulfillment.

Beyond its brilliant new power, and 70 mile an hour performance there is a wealth of comparison to high-priced cars, in fine detail, fittings, and operation advantages.

The new bodies are larger, roomier, more beautifully finished and smartly equipped. Driving ease is improved by even easier steering, quiet gear-shifting and greater motor smoothness. Four hydraulic shock absorbers add further to famous Essex riding ease. And there is mental as well as physical security in the new type double action

four-wheel brakes, which are weather-proof and respond uniformly to the lightest pressure in any weather.

These are but a few of the 76 advanced features which a million Super-Six owners are appraising in Essex the Challenger. Come examine and drive it. It will not only win your endorsement, but challenge your ownership interest against any value that motordom may offer.

Hear the radio program of the "Hudson-Essex Challengers" every Friday Evening

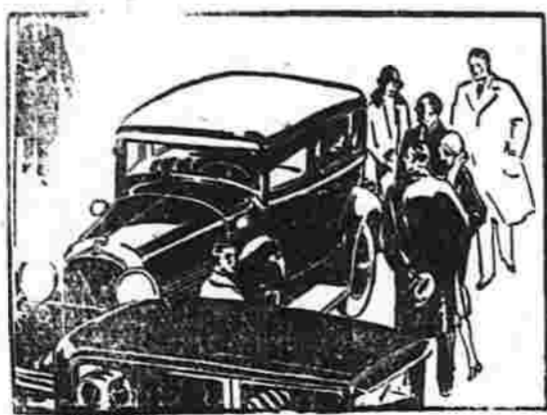
## GEORGE L. BETTS

129 SPRUCE STREET

SOUTH MANCHESTER

## MARMON

UNDER THE DIRECTION OF  
G. M. WILLIAMS



The show crowds come back to see this one—a straight-eight at the price of a six.

—New Series 68, \$1465. New Series 70, \$1965. Prices at factory. De luxe equipment extra. Convenient time-payment plan.

### CRAWFORD AUTO SUPPLY

101 Center Street, South Manchester  
East Hartford at Church Corners.

ARTISTRY AND SKILL IN NEW OLDSMOBILE

New Style Changes Give Additional Beauty to This Car at the Show.

Given additional beauty by advanced styling and new color combinations and with even greater power and finer performance, the Oldsmobile for 1929 is being displayed at the automobile show.



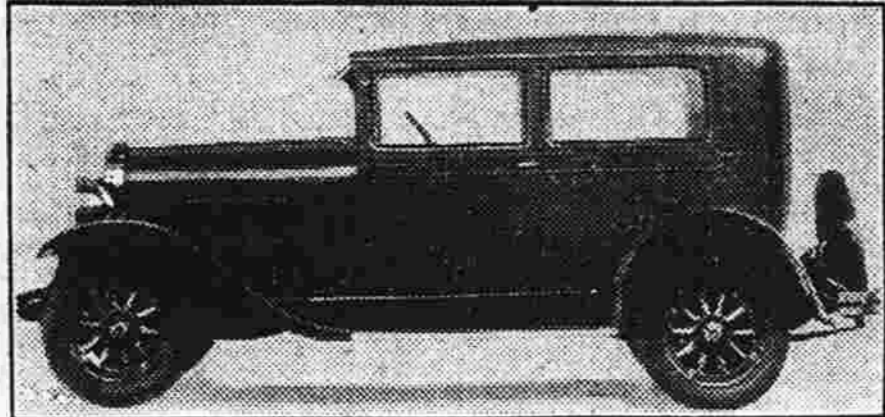
I. J. Reuter

The most apparent change in the outward appearance of the 1929 Oldsmobile is the addition of a heraldic crest on the radiator and the removal of the name plate to a chromium plated bar connecting the largest headlamps, which now are supported by chromium plated standards.

Adjustable front seats are now included in all closed models. These, with an even finer grade of mohair upholstery increase the comfort and beauty of the Fisher built body interiors.

The complete line of body models consists of seven standard models, all available in special and de luxe types. The line contains a landau sedan, four-door sedan, two-door sedan, sport coupe, business coupe, sport roadster and sport phaeton.

One of Oldsmobile's Line



1929 Oldsmobile Six Two-door Sedan

added power has brought even greater speed and smoothness of performance.

In this connection the connecting rods have been fully machined and ride drilled so that oil under pressure is injected through the rods to the piston pins.

A new air cleaner with a mineral wool content replaces the former cleaner of a centrifugal type.

Adjustable front seats, a new development by Fisher, are used in all closed body types.

Adjustable front seats are now included in all closed models. These, with an even finer grade of mohair upholstery increase the comfort and beauty of the Fisher built body interiors.

Wider doors are now being used on the coupe models. These are 34 3/8 inches, or 3 1/2 inches wider than heretofore.

Among the Oldsmobile color combinations the following are announced for the standard and special body types: Two-door sedan, Dallas gray upper quarters with Dunsuir gray panel and trim.

Colors for the de luxe body types are: Landau, Trouville blue. Four-door sedan, Bloomfield and Birmingham blue.

CHRYSLERS SHOW MANY INNOVATIONS

Developments Leadership Seen Once More in Newest Models.

One of the most interesting features of Chrysler's complete line of motor cars on display at the Automobile Show is the evidence they present that the company's habit of leading the automobile industry in important body and chassis developments continues with unbroken vigor.

Chrysler pioneered the way into this authoritative style and beauty in its new "78" and "65" cars and, more recently, in its new Imperial.

Chrysler pioneered the way into this authoritative style and beauty in its new "78" and "65" cars and, more recently, in its new Imperial.

"Opening of the New York show marked another step in our plans to offer a full line of rights in all price classes—cars that are the result of years of development by the most capable engineering and manufacturing staff possible for us to assemble under a single roof."

More than forty Marmon straight-eight automobiles were publicly displayed in New York during show week.

During the week of the show, a number of new Marmon dealers were established throughout the east, as well as in the south and middle west, indicating that the popularity of the Marmon straight-eight programs has had a marked effect on automobile merchants as well as the public.

Mr. Williams, in an interview in New York, gave an insight into plans of unusual size and importance for Marmon in 1929 when he said that "my most conservative estimate of Marmon production next year would place the total far ahead of the new record output established in 1928."

One of the outstanding features of Marmon activity at the New York show was a luncheon at the Commodore Hotel which was attended by nearly 500 automobile dealers from throughout the country.

In England one out of 200 children is said to be affected by word-blindness.

Another important contribution to motor car progress is the use of rubber shock insulator equipment in all its six cylinder cars.

Developments of this character are in line with Chrysler's traditional policy of leadership, points out Mr. Fields. "They were maintained consistently ever since Marmon's first features were revolutionary in their influence on automobile design.

Chrysler pioneered the way into this authoritative style and beauty in its new "78" and "65" cars and, more recently, in its new Imperial.

Chrysler pioneered the way into this authoritative style and beauty in its new "78" and "65" cars and, more recently, in its new Imperial.

Improved Winter Operation

Another pioneering achievement was the entirely new system of fuel distribution built into the first Chrysler.

Chrysler pioneered the way into this authoritative style and beauty in its new "78" and "65" cars and, more recently, in its new Imperial.

Chrysler pioneered the way into this authoritative style and beauty in its new "78" and "65" cars and, more recently, in its new Imperial.

Chrysler pioneered the way into this authoritative style and beauty in its new "78" and "65" cars and, more recently, in its new Imperial.

Chrysler pioneered the way into this authoritative style and beauty in its new "78" and "65" cars and, more recently, in its new Imperial.

Chrysler pioneered the way into this authoritative style and beauty in its new "78" and "65" cars and, more recently, in its new Imperial.

Chrysler pioneered the way into this authoritative style and beauty in its new "78" and "65" cars and, more recently, in its new Imperial.

Chrysler pioneered the way into this authoritative style and beauty in its new "78" and "65" cars and, more recently, in its new Imperial.

Chrysler pioneered the way into this authoritative style and beauty in its new "78" and "65" cars and, more recently, in its new Imperial.

Chrysler pioneered the way into this authoritative style and beauty in its new "78" and "65" cars and, more recently, in its new Imperial.

Chrysler pioneered the way into this authoritative style and beauty in its new "78" and "65" cars and, more recently, in its new Imperial.

Chrysler pioneered the way into this authoritative style and beauty in its new "78" and "65" cars and, more recently, in its new Imperial.

Chrysler pioneered the way into this authoritative style and beauty in its new "78" and "65" cars and, more recently, in its new Imperial.

Chrysler pioneered the way into this authoritative style and beauty in its new "78" and "65" cars and, more recently, in its new Imperial.

minimize crankcase dilution they introduced the electrical fume. Mainfold heat control, another pioneer step, insures more rapid cold weather efficiency.

GOOD TAXPAYERS Automobiles furnish 30 per cent of the taxes of Alabama, although they represent only 4 per cent of the taxable property of the state.

There are nearly 30 million motor cars in the world, one for each 64 of the population.

JOHN H. LAPPEN HANDLES ALL KINDS OF INSURANCE

John H. Lappen, one of the town's young insurance agents, writes all kinds of insurance in some of the largest and best known insurance companies.

Important forms on the installment payment plan, he sees no reason why every motorist should not be insured.

PRETTY CROWDED Figures from the Department of Commerce show that there are 4.81 motor vehicles to every mile of highway in the world and 59.91 persons to every automobile.

STOP! LOOK! LISTEN! Grade crossing casualties increased more than 30 per cent during the period from 1920 to 1927, according to the California State Automobile Association.

Automobile Insurance advertisement for PAGANI BROTHERS. Includes text: 'AUTOMOBILE INSURANCE PROTECT OTHERS AND YOURSELF Let Us Take Care of Your Automobile -INSURANCE- PAGANI BROTHERS INSURANCE OF ALL KINDS BANK BUILDING SOUTH MANCHESTER, CONN. PHONE 291'

CHRYSLER

Style and Beauty Leadership

No Accidental Creation

FOR THE FIRST TIME in Motor Cars—a Deliberate Design Using the Centuries-Old Canons of True Charm and Loveliness.

Chrysler's unerring success in developing, year after year, beauty and style which lead the motor car industry, may be credited to the very individual and definite plan which animates Chrysler design.

To achieve its unique beauty, Chrysler trusted no accidental inspiration of individual designers.

Instead it went directly to those sources of art and architecture which have come down the centuries unsurpassed and unchallenged.

These were studied, and examined, in the patient pursuit of authentic beauty. They were reduced to exact formulae of line and outline.

Then came the characteristically daring Chrysler step. These canons of ancient classic art were carefully translated into terms of motor car beauty and utility.

The results were hailed as masterpieces of dynamic symmetry—an expression as new to the industry as the Chrysler themselves.

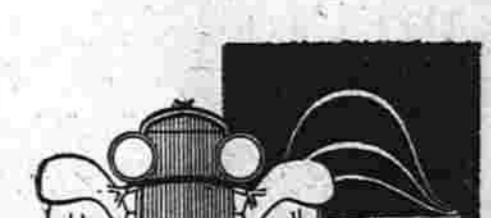
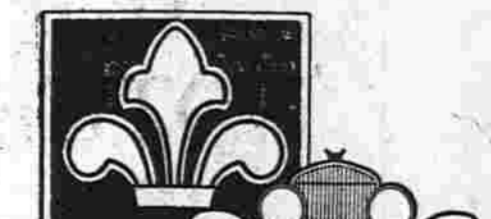
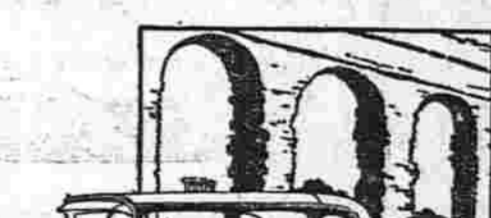
They show very definitely the workings of a plan, the like of which can be found nowhere else in the industry.

It is everywhere conceded that Chrysler style and beauty are today more striking than ever. The deliberate and conscious plan which gave them birth assured them and there the greater grace, charm and artistry in Chrysler cars.

New Chrysler "65" — Six body styles priced from \$1040 to \$1145. New Chrysler "75" — Nine body styles priced from \$1535 to \$2345. New Chrysler Imperial — Five custom styles priced from \$2675 to \$3475. All prices f. o. b. Detroit.

All Chrysler models — "65", "75" and the new Chrysler Imperial on display at the Automobile Show, and at all Dealers' Showrooms

GEORGE S. SMITH SOUTH MANCHESTER



THE most modern thing in motor car design — Chrysler's matching of slender-profile radiator with cowl-bar moulding — has its artistic origin in the repetition of motifs in the hieroglyphic frieze of the ancient Parthenon.

NOTE how the dynamic symmetry of Chrysler fender contours and wheels expresses the very essence of life and motion, just as do their counterparts in the "wave border" of the classic masterpieces of architecture and design.

IT may seem a far cry from the correct lines of an old Roman aqueduct to the "arched-window" silhouette of the Chrysler of today. Here it is, however — a plain indication of the artistry with which Chrysler lines are developed.

THE Chrysler front elevation indicates the influence of the Egyptian lotus leaf pattern. Modified to its modern application, it is perfectly proportioned, and applied with consummate artistry in blending beauty and utility.

ARTISTS know this as a "rising, diminishing series." The level road, the slightly arched bumper, the shorter arched tie-rod above, and finally the shorter and more deeply arched radiator contour, form a series in perfect harmony.

Advertisement for Automobile Insurance by Robert J. Smith. Includes text: 'FOR 15 YEARS When the Crash Comes WE HAVE BEEN PAYING LOSSES AUTOMOBILE INSURANCE It is the SERVICE and COMPANY That Counts. You need insurance protection only when in trouble and then YOU DO NEED IT and some REAL SERVICE with it. ROBERT J. SMITH 1009 MAIN ST. We Sell Aetna Combination Policies'

### DODGE'S NEW SIX HITS SALES MARK

#### Schaller Motor Sales Displays This Car at Manchester Show.

A record breaking volume of orders has followed the recent announcement of the Dodge Brothers New Six models throughout the country. The cars first displayed by Schaller Motor Sales, local dealer, will form one of the chief displays at the local automobile show.

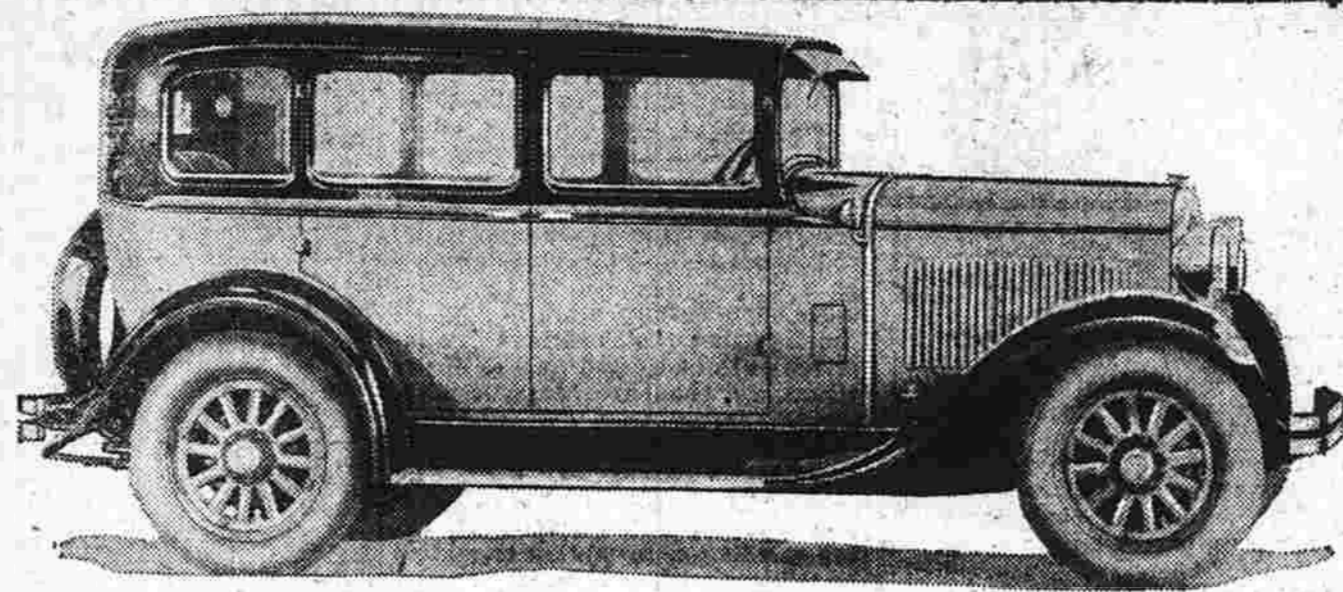
Early buyers of the new car have been enthusiastic in their praise of the car's performance, riding comfort and appearance. Mechanical refinements have provided increased power, speed and acceleration. The Mono-piece body construction has improved the appearance by retaining the long, low sweeping lines, with added interior roominess. The car is available in eight body types, including the 5 passenger sedan, roadster with rumble seat, 5 passenger sedan, 5 passenger de luxe sedan, 5 passenger brougham, 4 passenger Victoria, 2 passenger business coupe and de luxe coupe with rumble seat.

The car is a striking example of what Walter P. Chrysler has planned for the Dodge division of the Chrysler Corporation," said Charles W. Matheson, General Sales Manager for Dodge Brothers. It marks the advent of a new era in Dodge prestige. Production of the new car, combining the progressive principles of engineering with that ruggedness and dependability for years synonymous with Dodge Brothers products, has necessitated overtime schedules in the company plants to eliminate any possibility of delay in retail deliveries. It is a new car at a new price—made possible of production only by the union of such unique and vast facilities as are incorporated in these two great industrial organizations.

Special attention has been focused by the designers on greater roominess of all models yet the smart appearance of the new cars has not been sacrificed. Graceful lines, from the modern narrow radiator shell profile to the heavy enameled housing that covers the gasoline tank, are common to every car. All exterior hardware including lamps, molding, bumpers, door handles, radiator shell and hub caps are chromium plated. Fenders throughout are of exclusive Dodge design made in one piece. The sturdy monopiece body, and exclusive feature, insures road-riding steadiness, strength and comfort and eliminates side-sway.

The mohair upholstery shades match the exterior lacquer finish of the various bodies. Wide and deep cushions are tilted at the proper angles for riding comfort. Doors are exceptionally wide. Rear seat

### Sedan In Dodge Brothers New Six Line



BEAUTY in lines and colors is represented in this popular model of the Dodge Brothers New Six. The Mono-piece body, an exclusive feature, provides rigidity and balance, and is so mounted to the chassis that the car's roadability is an outstanding feature. Exterior hardware is chromium plated. Refinements in body construction afford maximum room and comfort for every passenger.

compartments are fitted with smoking sets and vanity cases. Controls are conveniently and attractively arranged in the indirectly lighted panel in front of the driver. The group includes speedometer, ammeter, oil gauge, fuel gauge, carburetor choke, manifold heat and spark controls and an improved theft lock ignition switch. The starter also is located on the dash instead of below, leaving both feet free for brakes and accelerator. Light control switches and gasoline throttle are conveniently arranged on top of the thin, one-piece steering wheel.

Except in the Victoria and the brougham, the hand brake is at the driver's right. Positive control of the car at all times is insured by Chrysler hydraulic, internal expanding four-wheel brakes. Other developments indicating the Chrysler improvements include a new type of transmission with unusually wide faced gears, and a sturdy rear axle with double thrust-absorbing roller bearings, changes that add materially to the performance. Greater strength, beauty and comfort are provided in new style elliptical spoked wheels, larger hub-caps, hydraulic shock absorbers and balloon tires.

Greater speed, quicker acceleration and increased power are developed by refinements of the engine, which is effectively insulated from the frame by a live rubber rear mounting. The cylinder head is detachable and the cylinders cast in block with the upper half of the crankcase. In addition, to the 65 miles an hour, the engine is capable of developing reserve power is available for higher speeds. An improved carburetor and ignition system have been adopted. Important engine accessories include oil and gasoline filters and air cleaners. A new front-end manifold for the exhaust eliminates engine heat in the front compartment.

Particularly attractive and distinctive color schemes have been chosen for the new models. Each has its own particular color in pastel and bold shades never before offered to the public.

Model A Ford cars, the latest improved examples of which are on display this week at the Manchester Auto Show, have undergone many remarkable tests in actual service since the new Fords were first introduced to the public a little over a year ago.

### FORDS UNDERGO STRIKING TESTS

#### Originally Intended to Try Out Tires But Prove Cars' Worth.

Some of the most striking of these tests have been conducted during the past year by American tire manufacturers who produce large quantities of tires designed and manufactured especially for use on Model A Ford cars. While these tests primarily were intended to try out the durability of the tires, they resulted in some very unusual performance on the part of the test cars themselves.

Several of these Model A Ford cars, all of them standard cars just as they are delivered to Ford car purchasers, have traveled more than 100,000 miles each, over all sorts of roads and under all varieties of weather conditions, and are still in excellent mechanical condition and ready for many more thousands of miles of useful and economical service. One of these cars was delivered

### BIG SALES RECORD BEHIND NASH CARS

#### New Twin Ignition "400" Series Has Features That Win Patrons.

Sweeping into 1929 with six months of the greatest sales and production records in company history behind the new twin-ignition, Salon type "400" Series of cars, the Nash Motors company offers American motorists and Automobile Show patrons a number of brand new and advanced motor car features which form one of the most interesting and valuable contributions made by the industry to the new year.

Color leads the list of the new Nash features in the unusually interesting Automobile Show display, with the revelation of sixteen beautiful new color blendings in pastel shades which combine the best artistic thought of color experts both at home and abroad to mark another step toward perfection in body finish. All of the new colors are the result of months of careful study, and add the final touch of beauty to the now famous Nash "400" line. On certain of the new models the finest broadcloth trimming has been introduced, as optional upholstery at no additional cost to the car buyer.

The handsome new "Royal" and "Regal" equipment, optional on all "400" Series models is another display highlight. "Royal" equipment consists of six wheels—two of them mounted in specially designed fender wells and equipped with wheel locks—six tires, two tire covers and folding trunk rack with

full length bumpers to protect trunk and rack. "Regal" equipment includes the same articles without the trunk rack for models having a built-in trunk as regular equipment. Wire and disc wheels, as well as the new wood wheels, which make their first appearance at the Show, are optional.

These new wood wheels available for "Royal" and "Regal" equipment, are of special designed, twelve-spoke type. They are finished in natural color and form another highly attractive feature for the new Nash cars, adding another step in Nash style advance. The wheel is a development of super strength exclusive to Nash models. It is of the demountable type and massive in construction, with chrome plated locking ring and hub flange, to make what is considered the strongest and handsomest automobile wheel available today.

Three complete groups of Nash cars, which have set new high standards in value for the American industry, make up the Show display. A striking cut-away chassis, which reveals all details of the great new Nash motor and the mechanical triumphs of "400" models; and a comprehensive showing of the new Salon bodies, which public judgment has placed at the head of the modern trend in design and style, complete the picture.

From the moment that these new type Nash cars were introduced, it was apparent to the initiated Motorist that C. W. Nash had achieved a record-breaking motor car and had fulfilled his life-long ambition to duplicate at moderate prices the quality and attractiveness of the most expensive automobiles built today. More than 2,000,000 people attended the initial national display and swept dealers floors clean of even the demonstrators so vital to the usual merchandising success. The unprecedented public demand, launched that day, flooded Nash factories at ever increasing peaks until, despite original expenditures of more than

\$2,500,000 in new "400" machinery and an additional expansion program amounting to more than \$2,000,000, orders exceeded by thousands of cars the maximum production afforded by the famous Nash precision manufacturing system, which no amount of public pressure was allowed to affect. In July, the first month following the "400" introduction, 2,916 cars were shipped and above the biggest previous July on company books. In August this increase advanced to 4,495 cars, in September it grew to 6,174 cars over the biggest previous September; in October it reached a margin of increase of 10,166 cars, and shortly after the middle of November the hundred thousandth "400" Series car built since the June introduction rolled from the production lines to

create a new all-time production and sales record. While this expression of public approval was piling up in every section of the United States, the new Nash series was enjoying like triumphs abroad. Export shipments in the three months ending October 31, it was found, exceeded by 808 cars the combined Nash export shipments for the calendar years of 1921, 1922, 1923 and 1924.

#### "CRACKING" INCREASES.

Five billion gallons of gasoline, or one-third the total consumed in the United States during 1928, were produced by the "cracking" process. This method utilizes high temperature and pressure to produce gasoline from fuel oils which at normal temperature and pressure would give none.

## ARTHUR A. KNOFLA AUTO INSURANCE

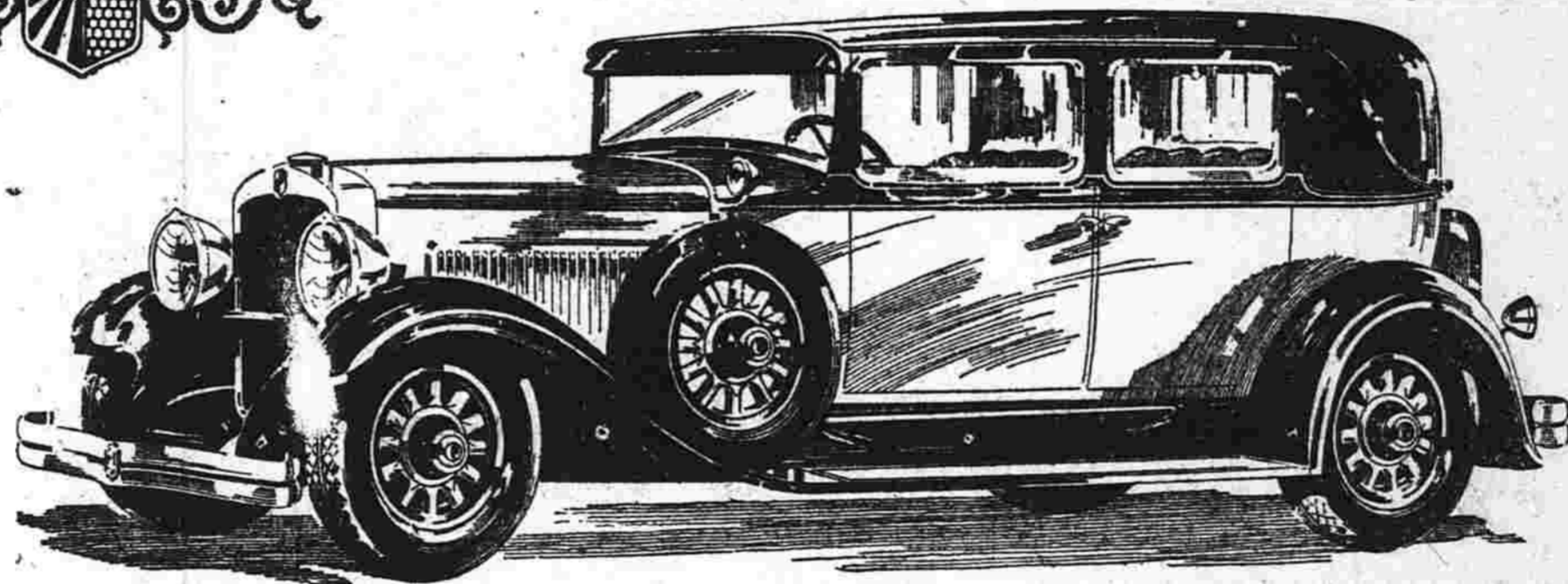
ASK FOR RATES

—LET US EXPLAIN—

875 Main

South Manchester

## THE RECORD-BREAKING NEW NASH "400"



### The New NASH "400" is the one car at the show you must not miss seeing

#### Twin-Ignition Motor

For more power and speed with greater economy of gasoline than possible with single ignition. At every speed this new Nash Twin-ignition motor delivers wonderful performance. Instant, alert get-away and surpassing smoothness through the full range of power and speed.

#### World's Easiest Driver Control

We challenge the world on this new "400" feature. Nowhere is there another car so marvelously easy to steer and turn and park, or with such effortless clutch action as the new Nash "400". Nash is far ahead of the industry in ease of driver control.

#### Houdaille Shock Absorbers

These Houdailles are especially engineered by Nash to the new "400" with outboard mounting, new to the industry and exclusive to Nash. They are double-acting—softening the action of the springs both when they are depressed and on the rebound and giving you fullest riding ease.

#### Front and Rear Bumpers

These are the finest bumpers built, exceptionally beautiful and strong. They are integrally designed by Nash to harmonize perfectly with the new "400" Salon body design. As regular equipment at no extra cost, they contribute to the remarkably low Nash price, delivered, in this city.

- In fact it is an entire show by itself - because it embodies all the newest and most valuable motor car developments - all as regular equipment at no extra cost.

... In any comparison you may make, your own good judgment will prove that we are under-stating the actual facts about the new NASH "400"...

#### Bijur Centralized Chassis Lubrication

Press a pedal and 21 points, including all spring shackles, are oiled automatically and instantly under 100 pounds pressure. Saves time and money. One of the greatest features of convenience and economy ever offered motorists.

#### T-Bearing Crankshaft

This is the world's finest practice - expensive, but worth it - because of finer performance than is possible with fewer bearings. Each connecting rod is given maximum support by big bearings on both sides. This is the modern type of engineering.

#### Refreshing Comfort

The deep, soft cushions, foam-filled to the body, the wide seats, the roominess of the Nash "400" interior, all help to bring you to the end of every ride refreshed beyond anything in your whole motor car experience. On the longest trip you rest as you ride.

#### Costly Car Interior Finish

Costly upholstery and luxurious craftsmanship distinguish the new Nash "400" interiors at once from competitive cars. You can see the difference the instant you open the door. Nash "400" interior finish is matched only by the very highest-priced cars.

## The NEW DODGE BROTHERS SIX —NEW Inside and Out

New and exclusive Mono-piece Body—a sensational type of body construction which banishes all squeaks and rattles; insures greater riding-steadiness, and increases comfort and safety.

NEW narrow-profile radiator; new one-piece fenders; new Chrysler steel channel running boards with moulded rubber coverings.

New chromium-plated, tarnish proof exterior fittings; new Butler-finished interior fittings; new comfort accessories and refinements; new charmingly tailored upholstery.

NEW and uniquely beautiful instrument grouping; a dash-panel button which starts the motor at a finger touch; new finger-thin steering wheel; new turn-at-a-touch roller-bearing steering gear; new Chrysler weatherproof hydraulic 4-

wheel brakes; Lovejoy hydraulic shock absorbers all around.

NEW wide channeled frame for greater strength; masterful motor with 7-bearing crankshaft, cushioned in live rubber; Invar-Strut aluminum alloy pistons; new simplicity and accessibility of engine assemblies; new front exhaust manifold to keep engine heat from driving compartment.

New transmission with wider faced gears; new double thrust-absorbing roller-bearings in the rugged rear axle; new type wheels with extra strong elliptical spokes and mushroom hub caps; new larger (5.50) oversize tires insuring unparalleled mileage economy.

NEWNESS throughout the car; newness that means bigger value; newness that gives greater dependability even for Dodge Brothers.

SEE IT AT THE SHOW!

### Schaller Motor Sales

634 Center St.

Tel. 1226-2

## NASH "400"

Leads the World in Motor Car Value

## MADDEN BROTHERS

CORNER MAIN ST. AND BRAINARD PLACE,

SOUTH MANCHESTER

**NEW STUDEBAKER  
LINES AT SHOW**

**First Appearance Here This  
Week; Many Improvements  
Noted.**

A new Commander Eight, an improved Commander Six at a new low price, and a new President Eight, make their first formal appearance here this week. Rounding out the complete Studebaker line are The Dictator and the Erskine Six.

The President is offered in two series with longer wheelbases of 125 and 135 inches. Both chassis are powered with a new 115 horsepower motor which has already demonstrated its ability by winning for Studebaker every official speed and endurance record for fully equipped stock cars regardless of power or price.

The new Commanders are mounted on chassis of 120 inches wheelbase. The Commander Eight develops 80 horsepower and the Six 75 horsepower. Both motors reflect the same brilliant qualities that have made "Commander performance" a standard of comparison for the past two years.

A complete range of beautiful new body styles is offered on the new Presidents and Commanders. Bodies are longer, lower and roomier, and are fitted with non-shatterable safety glass windshields with double blade windshield cleaners, and adjustable front seats for the driver. The adoption of double drop frame construction has had a marked effect in lowering the height of the bodies and has given the cars an even lower center of gravity for increased safety and roadability.

Many features which make for increased comfort are evident in the body design. There is more leg room in both front and rear compartments. Rear seats are wider, affording ample room for three persons as a result of an increase in the width of the rear tread to 59 inches on the President and 58 inches on the Commanders.

Every provision has been made for driving comfort. In addition to the adjustable seats there are adjustable brake and clutch pedals,

adjustable steering column, and a new treadle type accelerator. Foot pedals are fitted with rubber pads. The safety glass windshield can be opened to full ventilating position by means of a conveniently placed crank.

Adoption of non-shatterable glass for the windshield eliminates the hazards of broken windshield and flying glass. The new safety glass is made of two sheets of ground and polished plate glass laminated to a clear, transparent Pyralin binder. Even the severe impact of a hammer blow will not cause the glass to shatter.

The new bodies are as notable for their graceful lines and smart colors as for their roominess and comfort. A new treatment of moulding and body panels emphasizes their low hung appearance. The windshield pillars are gracefully curved from cowl to the trim polo cap visor. A broad body belt set off by raised mouldings extends from cowl to rear quarter, where it narrows to continue around the back panel. Deep window reveals are bordered by a moulding which adds new beauty to the smart color contrasts.

Wide crown fenders hang low over the wheels, flanking the bright chromium plated radiator and headlamps. The radiator is topped by a winged cap symbolic of Studebaker's championship speed, and the same winged motif is carried out in the design of head and cowl lights. Scratch-proof and non-tarnishing chromium plate is used to full advantage on lamps, cowl headlamps, bumpers and the big hub caps.

Many of the models have six wire wheels with the two spares carried in front fender wells.

Details of the interior treatment of the President and Commander bodies reveal a new degree of luxurious comfort and beauty. The wide form fitting seats are deeply cushioned on pillow type springs. Rear seats are flanked by heavily upholstered arm rests. The broughams are also fitted with a folding arm rest in the center of the rear seat. Upholstery fabrics are rich mohair, broadcloth, or Bedford Cord, with genuine leather in the open cars.

The complete appointments include eight-day clock, smoking set and vanity case in the President, 135-inch sedans and limousine. Folding ash receivers are recessed into the doors of five-passenger sedans, vicars and broughams. Cigarette lighters are regular equipment on many models. Onyx knobs are provided for horn button and gear shift lever. Spark and throttle levers and

thumb switch for the twin-beam headlights are mounted in the center of the thin grip, flat type steering wheel. The wheel is of steel core safety type which will not break or shatter under the most severe stresses, and conforms to the type prescribed by the safety code of the American Automobile Association.

Few cars in the history of the industry have caught and held the admiration of motorists more completely than The President Eight. Introduced just a year ago, it outsold every eight cylinder car in the world six months after its first appearance. Its sensational run of 30,000 miles in 26,326 minutes last summer, followed by its 24-hour run in November, when two stock roadsters averaged more than 85 miles per hour from dusk to dusk, gave Studebaker a clean sweep of official American stock car performance records as well as five world records and eight international records.

**This date in  
AMERICAN  
HISTORY**

- January 29
- 1621—Wife of Miles Standish died at Plymouth, Mass.
- 1795—Congress passed law abolishing titles of nobility.
- 1843—Birthday of President McKinley.
- 1850—Henry Clay introduced into Congress his compromise resolution on slavery.
- 1861—Kansas admitted as the 36th state.

**TALK GAS TAX.**

Bills introduced in the New York legislature provide for a 2-cent gasoline tax. New York is the only state in the Union without a gas tax. If this tax is adopted, it will bring in \$20,000,000 additional to the state.

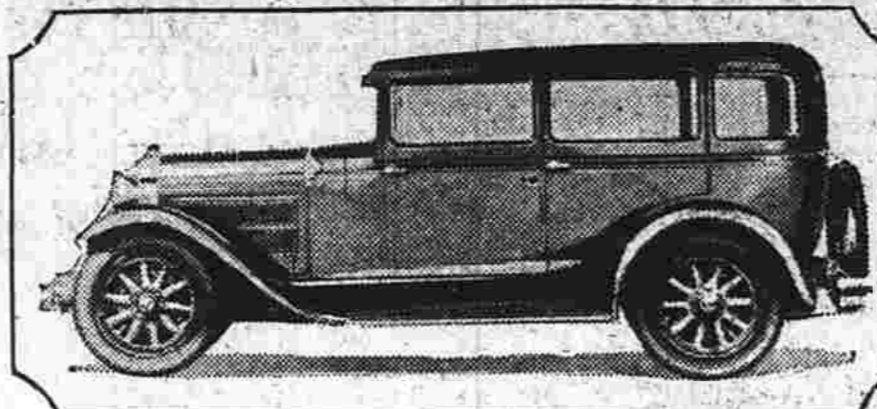
**MANY GET PILOT SLIPS.**

There were 4,690 licensed air pilots in this country on the first of the year, 34 of whom were women. California leads all other states in the number of licensed pilots.

**THE ANSWER**

Here is the answer to the Letter Golf puzzle on the comic page: SAID, SAND, SANE, DANE, DONE.

**Essex The Challenger Throws the Gauntlet**



The Hudson Motor Car Company, master builders of Super Six cylinder automobiles, has produced for 1929 a car which contains seventy-six improvements. Gasoline consumption is reduced; there is better carburetion with 24 per cent more power and increased speed. So confident are the makers of again dominating their price class they have styled the 1929 Essex line the Challenger. Quality consistent with the best taste in color and furnishings, has been particularly stressed.

While the new Essex, the lower-priced of the two cars built by Hudson Motor Car Company, is tagged with a list of 76 different mechanical and body improvements, the makers lay so much stress on the car's outstanding performance, that the new issue has been given the official name of "Essex the Challenger." There is speed—70 miles and more—and abundant power, because the output of the motor has been increased 24 per cent, to an actual 55 horsepower. Among the changes to which the greater speed and power are due are a larger bore, higher compression, increased valve lift, new cylinder head, improved valve timing, new location of spark plugs, new lubrication system, larger radiator, new type cooling fan, new muffler, higher gear

ratio of the final drive and other features.

The development of the power plant to an engine delivering 55 horsepower has led to the adoption of new main and connecting rod bearings of new design for which patent applications are pending. In the improved main bearings the lower half is without the conventional lubrication grooves and in the connecting rod bearings the upper halves are ungrooved. On the other hand, the upper main bearings and the lower connecting rod bearings are grooved in accordance with a new system that provides copious lubrication in spite of the fact that the bearings themselves are adjusted with closer clearances than are common practice.

Also, through the adoption of a new Marvel carburetor with two heat controls, adjustments for temperature and climatic changes, etc., the gasoline consumption is said to be still lower than before.

Essex the Challenger now comes with a new steering gear, adjustable for the driver's height and operating on roller bearings throughout the entire mechanism. A new four-wheel brake system has been provided. It is of the two-shoe type, completely covered. Molded composition blocks are used instead of textile linings, and brake adjustment can be made without tools. Seven body types are furnished,

namely: roadster, phaeton, coupe, convertible coupe, coach, standard sedan and town sedan. The convertible coupe and the town sedan are newcomers to the Essex line.

A Minneapolis man sued because his cigarette-lighter wouldn't work. It is interesting to note that somebody really bought a cigarette lighter that he didn't give to a friend.

**SALT HARMS ROADS**

Pennsylvania has barred from its highways ice cream trucks on which provisions have not been made to prevent the dripping of salt water on the roads. Laboratory tests have proven that the salt harms the roads.



Who Licks the Cream?

**AUTOMOBILE INSURANCE AT COST**

The Lumberman's Mutual returned 25% of the premium paid to every policyholder last year and have always done so. DID YOU GET ANY MONEY BACK ON YOUR POLICY? If you want to reduce the cost of your auto insurance see me before you renew your present policy or insure your car. I will be glad to explain how you can insure your car in the World's Greatest Mutual at 25% saving.

**STUART J. WASLEY**

REAL ESTATE INSURANCE  
815 Main Street Tel. 1428-2

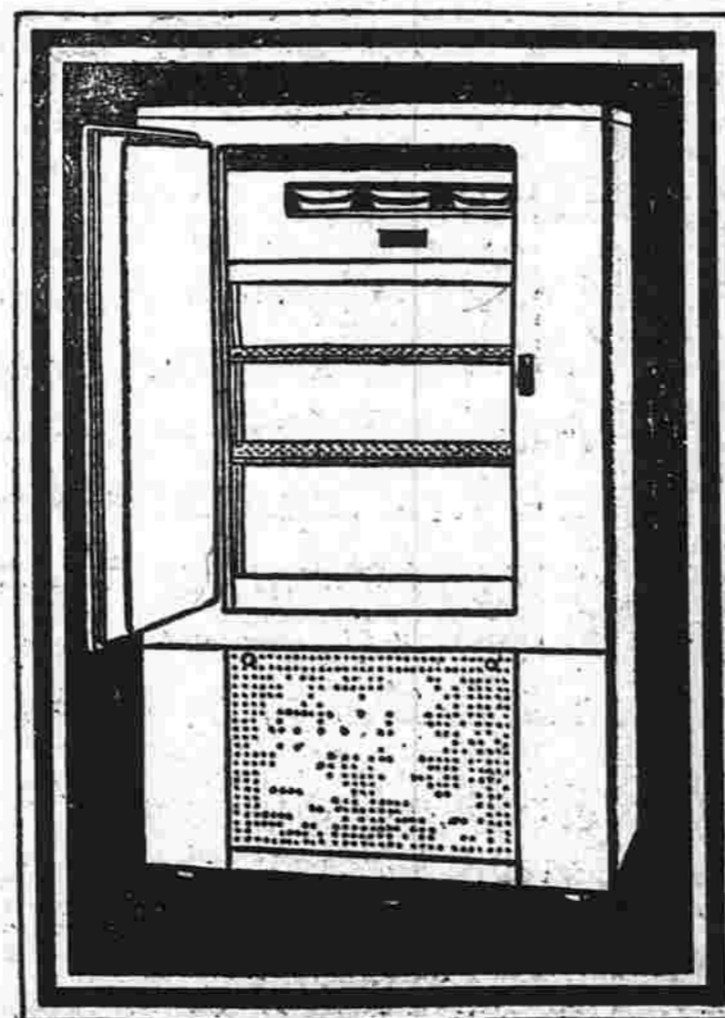
**We Invite You To See and Hear  
These Modern Appliances For The Home  
At Our Booth At**

**THE AUTOMOBILE SHOW**  
**GREBE and RCA RADIO**  
**NOKOL and AETNA OIL BURNERS**  
**KELVINATOR ELECTRIC REFRIGERATION**  
**LYNN RANGE OIL BURNER**  
**STERLING RANGES**

After a Thorough Investigation  
I Have Decided to Sell

**KELVINATOR**

Household and Commercial Refrigeration in  
Manchester and Vicinity.



15 Years  
of Quality  
Leadership  
Is Your Best  
Guarantee of  
Utmost  
Dependability,  
Economy and  
Lasting  
Satisfaction

**Add A Kelvinator**  
To Your Kitchen

When You Do So Your Home Will Be "Different".  
Kelvinator is the oldest electric refrigeration. First  
unit installed still operating satisfactorily.

**NO COAL**  
**NOKOL**  
REG. U.S. PAT. OFF.  
AUTOMATIC OIL HEATING FOR HOMES

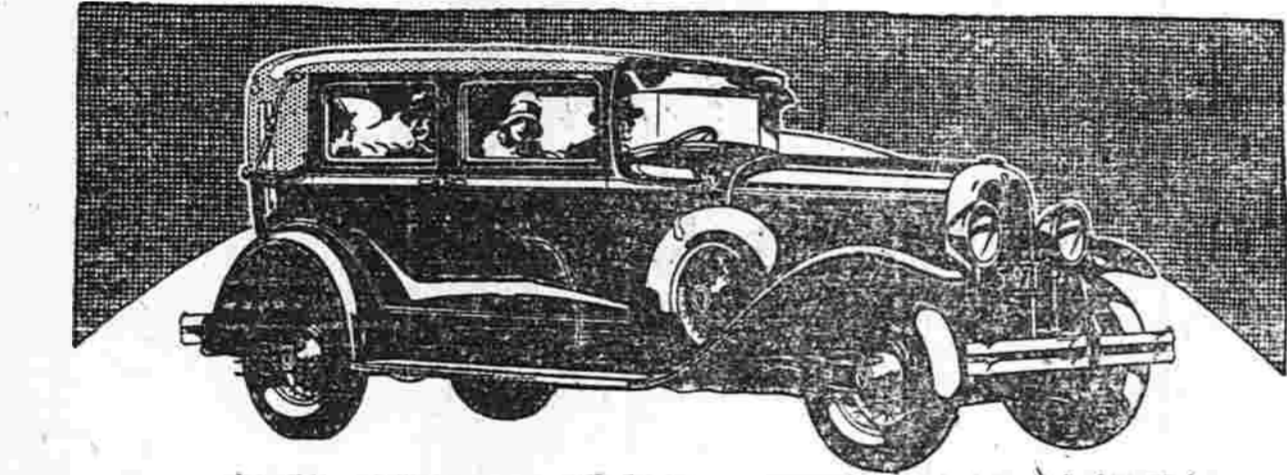
**NOISELESS**  
**SAFE**  
**EFFICIENT**  
Keeps Homes  
Warm and  
Comfortable.  
Eliminates  
Dirt, Soot, Ashes  
and Shoveling  
Coal.  
**AETNA**  
**BURNERS**  
Made by the  
makers of Nokol  
Burners.



FOR INDUSTRIAL WORK, CHURCHES, SCHOOLS  
AND PUBLIC BUILDINGS

**ALFRED A. GREZEL**

Headquarters for Plumbing and Heating Supplies.  
MAIN STREET, OPPOSITE PARK STREET SOUTH MANCHESTER



**A New All-American that  
All America Is Acclaiming**

Announced a few short weeks ago... a magnificent successor to a justly famous name. And now the New All-American Six by Oakland is enjoying the nation's admiration... winning the praise of all America.

Enjoying the admiration caused by its new and original beauty. By the luxury of its superb new bodies by Fisher. By its truly distinctive style. Winning praise for its pulse-stirring performance... for its glorious pick-up, power and speed.

And those familiar with its mechanical quality marvel at the manner in which it is built. At such fine car features as an accurately balanced "line of drive"... dynamically balanced, counter-weighted crankshaft... elusive patented rubber cushioned engine mounting... dirt-and-weather-proof internal-expanding four-wheel brakes.

Small wonder that a car so wonderfully constructed... so brilliantly styled... should be winning America's acclaim. Especially since the New All-American is available at such a surprisingly moderate price.

Prices \$1145 to \$1375 f. o. b. factory, plus delivery charges. Lovejoy Hydraulic Shock Absorbers and spring covers included in list prices. Bumpers and rear fender guards extra. Check Oakland delivery prices—they include lowest handling charges. General Motors Time Payment Plan available at minimum rate.

SEE IT AT THE AUTO SHOW

**KEMP BROTHERS**

130 Center St., South Manchester

**A NEW  
ALL-AMERICAN SIX**  
BY OAKLAND

## DESOTO SUCCESS IS DUE TO ENGINE

Car Cannot Be Better Than Its Power Plant Say Officials.

Much of the remarkable success attained by the Chrysler-built DeSoto Six during the five months it has been on the market is due to the engine with which it is powered, DeSoto officials point out. No car, they say, can be better than its power plant since all its other attributes merely supplement the services rendered by the engine.

The engine of the DeSoto Six was designed by the same corps of engineers which for the last four years has been responsible for the enviable and world-wide reputation for quality enjoyed by Chrysler engines. It is not an experiment but a natural outgrowth of Chrysler's years of experience in designing and building high grade automobile engines.

Engineers cite, as one reason for this extraordinary power development, the short, heavy and rigid crankshaft. The design and construction of the crankshaft, which is only thirty and twenty-nine thirty-seconds inches long, give extreme rigidity to the shaft for its mounting in its four babbit lined bearings. At the main bearings the shaft is two and one-quarter inches in diameter, giving unusually rigid support to the shaft at these points. Centrifugal forces in the Chrysler-built DeSoto Six have been neutralized by means of counterweights installed on the crankshaft. By neutralizing the centrifugal forces in this manner, it is possible to minimize side pressures on the main bearings. Reduction of these pressures through the use of counterweights is one of the reasons why the DeSoto Six develops the tremendous horsepower that it does for its size. As a result, the crankshaft virtually floats on a film of oil, reducing friction and the attendant bearings and crankshaft wear which comes with excessive friction.

The counterweights are in no sense of the word counterbalances, since the DeSoto Six crankshaft is fully balanced both statically and dynamically after the counterweights are in place. This careful balancing insures a smooth flow of power at all speeds of the engine. In addition to the crankshaft, the other parts in the drive line are also balanced. The flywheel, clutch plates, and other revolving parts are carefully balanced both statically and dynamically in order to prevent vibration of the car at high road speeds and in order not to upset the fine balance of the crankshaft.

The cylinder block and crankcase of the DeSoto Six are cast integrally, fully webbed and rigidly supported in girder-like fashion. Webs supporting the main bearings are unusually heavy in order to give the crankshaft the rigid foundation necessary for any structure

developing the tremendous amount of power developed by the DeSoto engine. Flanges running lengthwise to the crankcase and parallel to the centerline of the crankshaft, afford the crankcase rigid support in the horizontal plane. This rigid construction permits the maximum power output under normal conditions without strain or stress.

A score of other high grade engineering features which have been incorporated in the DeSoto Six engine give it additional distinction and make it unlike any other power plant in the price field of this car. They include pistons of the Chrysler-designed iso-therm Invar strut construction, giving all the desirable low expansion properties of cast iron with the thermal conductivity and light weight of aluminum, and making a composite piston better than either type and having the disadvantages of neither. Piston rings are of the Chrysler designed tongue and groove type, lending added assurance of satisfactory performance. Positive full pressure lubrication oils all camshaft and connecting rod bearings; crankcase ventilation reduces the destructive action of harmful gases by dispersing them before they condense. Inlet valves are of chrome nickel steel and of unusually large design. Exhaust valves are also large and are built of heat resisting silicome steel. The "Silver Dome" high compression cylinder head, perfected by Chrysler engineers, which uses any of the standard grades of gasoline, is standard on the DeSoto Six, while the famous "Red Head," which extracts even greater speed, power and hill-climbing ability from the high compression fuels, is readily obtainable.

**AIRPLANES INCREASE.**  
The increasing popularity of aviation in Canada is shown in a statement by the Chamber of Commerce crediting the Dominion with 303 airplanes in operation there on the first of this year. This is three times the total of one year ago.

## SAME LICENSE LAWS UP IN MANY STATES

New York, Jan. 29.—In most of the 43 states whose legislatures convene this month, the National Automobile Chamber of Commerce will seek to have the "Hoover Uniform License Law" adopted.

It is already in effect in 11 states where, according to National Safety Council figures, motor accidents have been cut 20 per cent. The code grew out of a conference organized in 1924 under the chairmanship of Herbert Hoover which was attended by traffic authorities from every section of the country. Its chief features are:

- 1—No person shall drive a motor vehicle unless licensed by the state vehicle department.
- 2—Licenses shall not be issued to persons under 16.
- 3—Licenses shall not be issued to persons unable to understand signs in English.
- 4—Licenses shall not be issued to habitual drunkards, druggadicts, insane or feeble minded or those afflicted with physical or mental disability such as to prevent reasonable control over a motor vehicle.
- 5—Those who have previously driven a car at the time when the law is first enacted may obtain license upon application.
- 6—All new drivers must pass an examination.
- 7—Re-licensing shall not be required more than once every three years.
- 8—Courts shall report to the state department all convictions for violations of motor laws and may recommend suspension of license.
- 9—Any person who has been denied a license or whose license has been revoked may appeal to the courts.
- 10—Application of minors under 18 must be signed by parent or guardian or employer, who then becomes liable for any negligence in driving by such minor.

## HUPP SUCCESS IN SALES PEAK

New Century Has Gained Firm Hold in Mind of Buying Public.

During the twelve months of 1928 the Hupp Motor Car Corporation not only exceeded its 1927 sales by more than 60 per cent, but the acceptance of the New Century Eight and Sixes established a high mark in Hupp history by beating the best previous mark by more than 49 per cent, according to a statement by R. S. Cole, vice-president in charge of sales.

"It is a significant fact," asserts Mr. Cole, "that the record-breaking demand for these new cars on their introduction continued unabated so that the Hupp factory, day after day and week after week, smashed previous high production records. It is just as significant that this enormous popularity in America was duplicated in Canadian and export sales, which also established new sales marks while sales records here were being broken.

**40 Per Cent Repeat Business**  
"Another marked fact, substantiated by factory records, is that the repeat business, or second sales, on Hupmobile cars will average approximately 40 per cent over a period of several years. This figure also throws an illuminating light on the popular conception of Hupmobile style and value.

"Prior to the introduction of the new cars (the Century Six and Eight came in October, 1927, and January, 1928, respectively), No-

ember of 1927 was the best month in Hupmobile history, when 5075 Hupmobile cars were sold. Likewise, the months of October, November and December, or 1927, constituted, until this year, the greatest quarter in Hupmobile history. The New Century models changed all that. January, February and March, of 1928, became the record-breaking quarter-period. This increase continued substantially into the remaining periods of

1928. Public appreciation of the New Century models continued unabated.

"And so Hupmobile, in introducing two new lines of cars with new hair and style, has established a new year's record that exceeds the best previous year in company history by about 70 per cent."

**RESEARCH COST HIGH.**  
The U. S. Bureau of Public Roads, the various state highway departments and agricultural colleges and experiment stations spent a total of nearly \$1,000,000 for the study of highway conditions and other research work during 1928.

You can easily tell the modern mother and her daughter apart. The mother is the one who looks so young.

## ATTENTION CHEVROLET OWNERS

Our Chevrolet mechanics are still in our employ and we still have all the Chevrolet special equipment to work with including a complete stock of Chevrolet parts.

Although we have discontinued selling Chevrolet cars we stand ready to give Chevrolet owners the best possible service.

**H. A. STEPHENS**  
Cor. Center and Knox Sts., South Manchester

# Success...

## Surpassing All Records In Motor Car History

THERE is no gain-saying the tremendous popularity of the new De Soto Six. The public has heaped upon this magnificent Chrysler-built six a record of success without precedent or parallel in the industry.

From August 4 - when the first announcement was made - to December 31, more than 35,000 De Soto Sixes were built and shipped from the factory, and demand is insistently calling for more.

Thus De Soto Six comes to its first Manchester automobile show with a record of success never before attained by any new car in its initial five months of production. Again, the public pays eager tribute to the beauty, comfort, performance and value that only Chrysler can give in a car so moderately priced.



Faeton, \$845; Roadster Espanol, \$845; Sedan Coche, \$845; Coupe Business, \$845; Sedan, \$885; Coupe de Lujo, \$885; Sedan de Lujo, \$955. All prices at factory.

# DE SOTO SIX

PRODUCT of CHRYSLER

SEE IT AT THE AUTO SHOW

## H. A. STEPHENS

Cor. Center and Knox Sts. South Manchester

# Announcing

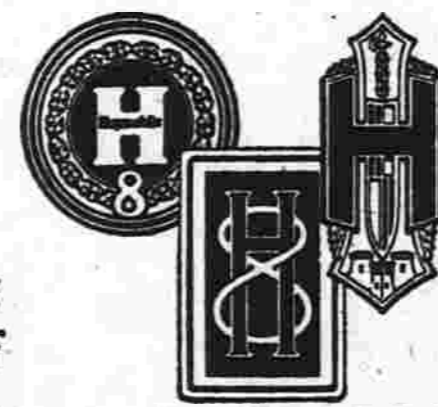
## H. A. STEPHENS

Corner Center and Knox Sts., South Manchester

as Authorized Hupmobile Dealer  
Offering the Hupmobile

# CENTURY

EIGHT & SIX



THE addition of this strong company to the ranks of Hupmobile dealers, reflects the high caliber of business men now being attracted to Hupmobile by the phenomenal success of the new Hupmobile Century Eight and Six.

For 20 years the name Hupmobile has been identified in the public mind with the highest manufacturing ideals in the automobile industry.

Now to this prestige of engineering and manufacturing skill, is added the prestige of the Century's greatest advance in unusual and distinctive body styles.

New and impressive beauty, new and brilliant qualities of performance now surround the entire Hupmobile Century line whether your choice falls on the striking new Hupmobile Century Six and Eight or the equally luxurious Century 125 Eight—a car that has consistently led all straight-eights in sales since first announced.

We cordially invite the public to visit our new dealer's showroom and inspect the new Hupmobile Century Line now embracing more than fifty distinguished standard and custom-equipped models on three different wheelbases.

HUPP MOTOR CAR CORPORATION

Detroit, Michigan

Orekhid

THIS HAS HAPPENED ASHTORETH ASHE, honeymooning in Paris, meets an old sweetheart, MONTY ENGLISH. Monty is young and handsome, but Ashtoreth turned him down because he was only a radio salesman, and poor as poverty.

Now she is sitting with Monty at a little sidewalk cafe near the Flower Market, watching the French sweethearts make love to each other. Monty tells Ashtoreth how he has come to Paris, to sell radios. Suddenly he leans to her across the table.

"How do you mean—unreasonable, Monty?" "Oh, it makes savages stick rings through their noses, and smile at her indignantly. "And it makes her run out of wise guys. And little girls ask questions. It's a snare and a delusion, that's what it is."

ing over on the Left Bank, and no-body speaks any English, and Monty doesn't know much French yet. And I could just tell he was so desolate. So I thought it would be awful nice, dear, if you didn't mind, to have him up for dinner some time."

Often it is difficult for parents to agree on the manner of bringing up their children but it is still more difficult sometimes for grandmothers and mothers to agree. Grandmothers are apt to say, "I know, for I have already brought up one family," and mothers are likely to answer, and rightly, "It is my job and I'll have to learn."

YOUR CHILDREN

by Olive Roberts Barton

Often it is difficult for parents to agree on the manner of bringing up their children but it is still more difficult sometimes for grandmothers and mothers to agree. Grandmothers are apt to say, "I know, for I have already brought up one family," and mothers are likely to answer, and rightly, "It is my job and I'll have to learn."

THE WOMAN'S DAY by ALLENE SUMNER. When woman breaks the law, she insists on arguing herself and everyone else into believing that she has only done what she had every right in the world to do and that the law is a silly old thing.

Styless by ANETTE

Paris—New York



It is better to allow mothers to attend to the training of the children. If a little spanking is impending, that is the time I'd advise Grandma to make a few long put-off calls. And if she has to let off a little indignant steam, dear soul, it would be an excellent idea for her to call on an old friend or neighbor who is in the same plight she is.

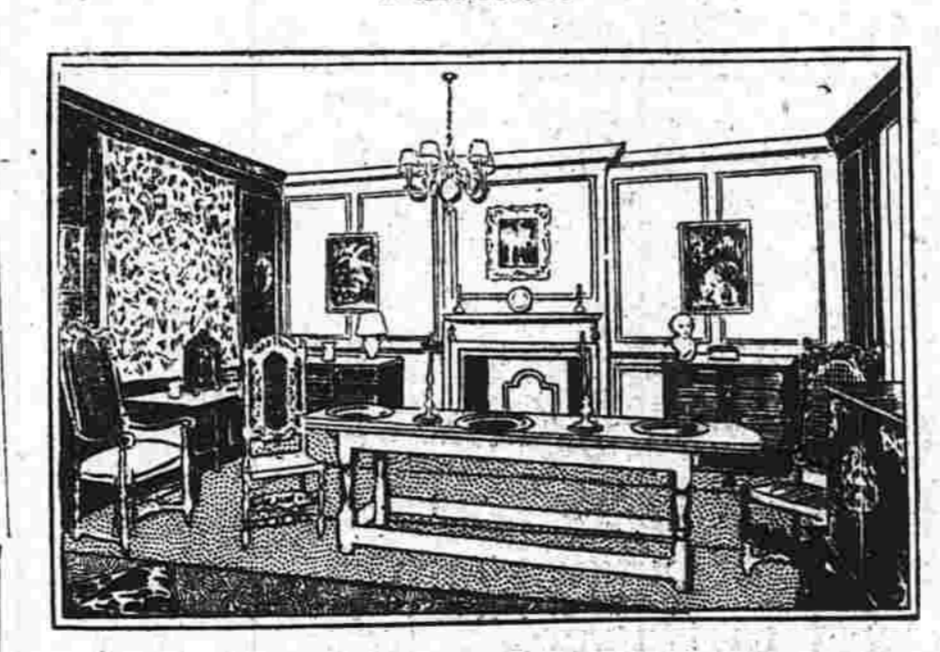
DO YOU WEAR A "U"?

Illustration of a woman in a dress with a 'U' pattern. Text: 'You Do If You're in the South These Days'. 'One of those Ultra-U-backed Bathing Suits'. 'And just because the Sun has things I up Doing I'm Prone to our Evening Rock'. 'Wrap'. 'Everything Must Follow the Lines of U!'.

Daily Health Service. HINTS ON HOW TO KEEP WELL by World Famed Authority.

OPEN-WEAVE CLOTH BEST FOR SUN BATHING. By DR. MORRIS FISHER. Editor Journal of the American Medical Association and of Hygiene, the Health Magazine.

Curve Reigns Supreme in Queen Anne Furniture



A room with Queen Anne furnishings. By WILLIAM H. WILSON. The days of Queen Anne saw the revolution forecast in the reign of William and Mary.

THIS IS THE NEW "bow bag," just arrived from Paris—black cat trimmed with applique of green leaves. This style, although a huge amount of nonstop needlework was produced at the time, for the good Queen Anne was nothing if not a Bourgeois housewife, and fond of sentimental wall mottoes.

WOMEN SHOULD LEARN USES OF MAGNESIA

To women who suffer from nausea, or so-called "morning sickness," this simple measure is proving a blessing. Most nurses know and it is advised by leading specialists.

Baking Powder Plus! Rumford adds real food value to cakes, hot breads and pastry. In addition to raising batter and dough just right it also makes baked food actually more nourishing.

Advertisement for RUMFORD BAKING POWDER. It Never Spoils a Baking.

LOCAL MAN ATTENDING STYLE EXHIBIT IN N. Y.

J. Fradin of Fradin's Apparel Shop is today attending an exhibition of Spring styles at his buying office in New York City.

Advertisement for Clean Milk from Connecticut Farms. Includes products like Butter, Light Coffee Cream, Heavy Whipping Cream, Butter-Salt and Sweet Butter, Chocolate Syrup, Cream Cottage Cheese, Sour Cream, Acidophilus Milk.



NEW HAVEN QUINTET FACES REC FIVE HERE THIS EVENING

MURPHY AND SAIDELLA DEFEAT CONRAN AND KEBART 108 PINS

Town Champ Averages 118 As He and Partner Win Five of Seven Games Rolled Over North.

Howard Murphy and Jack Saidella, representing the south end, won the first leg of their home and home match with Tommy Conran and Charlie Kebart of the north end at Conran's alleys last night by a total of 108 pins.

HERMAN KAYOES TERRIS IN SIXTH

Ghetto Ghost Tries to Stage a Comeback in New York But Fails in Attempt.

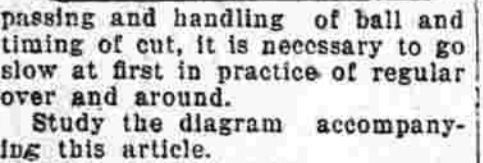
New York, Jan. 29.—Three thousand faithful supporters of Sid Terris, perennial canvas kisser, saw the erstwhile dancing master fall down and go boom in the sixth round of his bout with Babe Herman, Sacramento, Cal., lightweight, at the St. Nicholas arena last night.



YOU and BASKETBALL

BY H. C. CARLSON, M. D. University of Pittsburgh Basketball Coach

To develop the rhythm of the three-man offensive may seem to require too much work, but the average basketball player has a desire to be foxy and he therefore likes the idea of the take and the feint.



passing and handling of ball and timing of cut, it is necessary to go slow at first in practice of regular over and around.

FIRST INVASION OF EAST. For the first time in history, the Iowa baseball team will make a journey east this spring, going as far east as Boston for games.

OUT OF THE PAST



Those who saw it, never will forget that memorable "Battle of the Giants" at Mississippi City in 1882 when John L. Sullivan won the heavyweight championship from Paddy Ryan in nine rounds.

HERE'S THE DOPE by Tom Stowe

FRANK BUSCH FOUGHT STIRBLING. With the approach of the Sharkey-Stirling fight in Miami next month, it will no doubt be of more than passing interest to learn that Frank C. Busch, boxing and swimming instructor at the School Street Recreation Center, once fought Stirling.

With the approach of the Sharkey-Stirling fight in Miami next month, it will no doubt be of more than passing interest to learn that Frank C. Busch, boxing and swimming instructor at the School Street Recreation Center, once fought Stirling.

Tom Cheek Oldest Turfman Dies In Havana Aged 105

Havana, Cuba, Jan. 29.—The carnival spirit of the racing colony at Oriental Park was dampened today by the death of Tom Cheek, the oldest active race horse owner in the world.

KEBART KEEPS OUT IN FRONT

Has Slight Lead Over Conran; Curtis Drops to Sixth Place In Herald League.

Charlie Kebart maintains his lead in the Herald Bowling League individual average race, according to the list announced today by Secretary Frank Cervink.

WILL THIS HOLD FAIL?



Ed Strangler Lewis, recent wrestling champion, is shown with a wedlock hold on Miss Elaine Tomaso of Chicago, who is to become his bride soon.

NOW SLICED BY Henry L. Farrell

FIGURE THIS OUT. The gentlemen who have been commissioned to crown the new heavyweight champion by presenting him with the Tunney-Muldoon trophy have ruled that the name of Tommy Burns shall not appear on the trophy as a former champion.

There was Precedent. The gesture that Tunney made in offering the trophy is the same one, in principle, that Jeffries made when he said that Hart was the new champion and the same one that Jack McAuliffe made when he retired undefeated and turned over his belt to Kid Lavigne.

Hurry for Dempsey. If they write Dempsey's name on the trophy and crown him as the official champion, Tunney may become as glassy-eyed as he was on the floor in Chicago but the public will probably second the motion.

NO EASY GAME HERE. The first three opponents on the 1929 Nebraska football schedule are Southern Methodist, Syracuse and Pittsburgh.

BEST BY EARNED RUNS. The best pitcher in the International Association in 1928, according to earned runs allowed, was Maurice Bream of Jersey City.

HOPES OF NORTHWESTERN. Rut Walter and Tom Warne are expected to be the stars of the Northwestern track team this year.

COACHES TEAM AND BOXES. Lou Mutzel, a sophomore at Bucknell, is coach of the boxing team and also a member of the team as a light heavyweight.

MAY TRY A COMEBACK. Johnny Buff, famous little flyweight of several years ago, may try a ring comeback in the next few months.

DE MOLAY BEATEN IN LAST QUARTER. The Manchester De Molay basketball team faltered in the last quarter of a game with the Warriors Saturday night at the Rec and went down to defeat to the tune of 43-34.

Warriors Pull Game Out of Fire 43 to 34; Kerr, Sturgeon, Vince, Spillane Star.

WARRIORS (43). Sturgeon, rt. . . . . 5 3 13 Vince, lf. . . . . 5 1 11 Spillane, c. . . . . 1 1 1 Wells, rb. . . . . 0 1 1 Reid, lf. . . . . 3 1 7

DE MOLAY (34). Hilden, rf. . . . . 5 0 6 Smith, lf. . . . . 1 0 2 McCaw, c. . . . . 3 2 8 Kerr, rb. . . . . 6 1 13 Moore, lb. . . . . 2 1 5

Referee: Cordera. 15 4 34

ST. MICHAELS ARE ALL SET TO HAND CLUNITES BEATING

Westfield Girls in Preliminary; New Britain, Canadians and Bristol Here Three Following Weeks.



It was learned today that the St. Michaels are bringing a strengthened team to Manchester tonight in hopes of being the first club to stop the Rec on its home floor this season.

Demolay Beaten in Last Quarter. The Manchester De Molay basketball team faltered in the last quarter of a game with the Warriors Saturday night at the Rec.

Warriors Pull Game Out of Fire 43 to 34; Kerr, Sturgeon, Vince, Spillane Star.

WARRIORS (43). Sturgeon, rt. . . . . 5 3 13 Vince, lf. . . . . 5 1 11 Spillane, c. . . . . 1 1 1 Wells, rb. . . . . 0 1 1 Reid, lf. . . . . 3 1 7

DE MOLAY (34). Hilden, rf. . . . . 5 0 6 Smith, lf. . . . . 1 0 2 McCaw, c. . . . . 3 2 8 Kerr, rb. . . . . 6 1 13 Moore, lb. . . . . 2 1 5

Referee: Cordera. 15 4 34

Ping Pong Balls as 'Life Savers' on Segrave's Yacht. London—Five thousand ping-pong balls form an important component of the new 1,000 horsepower speedboat in which Major H. O. D. Segrave, the famous British racing motorist, will attempt to shatter all existing motor-boat speed records in the United States early this year.

SOUTH ENDS LOSE BY 66 PINS HERE

The Charter Oaks beat the South Ends of Hartford by 66 pins in a three-game match at the Charter Oaks alleys here last night.

Jackie Fields Wins Over Jack McCarthy. Chicago, Jan. 29.—Jackie Fields, Los Angeles welterweight, today was one notch nearer his cherished championship match with Joe Phan-see following his elimination of Jack McCarthy of Chicago in a ten round bout here last night.

Jackie Fields Wins Over Jack McCarthy. Chicago, Jan. 29.—Jackie Fields, Los Angeles welterweight, today was one notch nearer his cherished championship match with Joe Phan-see following his elimination of Jack McCarthy of Chicago in a ten round bout here last night.

Jackie Fields Wins Over Jack McCarthy. Chicago, Jan. 29.—Jackie Fields, Los Angeles welterweight, today was one notch nearer his cherished championship match with Joe Phan-see following his elimination of Jack McCarthy of Chicago in a ten round bout here last night.

Jackie Fields Wins Over Jack McCarthy. Chicago, Jan. 29.—Jackie Fields, Los Angeles welterweight, today was one notch nearer his cherished championship match with Joe Phan-see following his elimination of Jack McCarthy of Chicago in a ten round bout here last night.

Jackie Fields Wins Over Jack McCarthy. Chicago, Jan. 29.—Jackie Fields, Los Angeles welterweight, today was one notch nearer his cherished championship match with Joe Phan-see following his elimination of Jack McCarthy of Chicago in a ten round bout here last night.

Jackie Fields Wins Over Jack McCarthy. Chicago, Jan. 29.—Jackie Fields, Los Angeles welterweight, today was one notch nearer his cherished championship match with Joe Phan-see following his elimination of Jack McCarthy of Chicago in a ten round bout here last night.

Jackie Fields Wins Over Jack McCarthy. Chicago, Jan. 29.—Jackie Fields, Los Angeles welterweight, today was one notch nearer his cherished championship match with Joe Phan-see following his elimination of Jack McCarthy of Chicago in a ten round bout here last night.

Jackie Fields Wins Over Jack McCarthy. Chicago, Jan. 29.—Jackie Fields, Los Angeles welterweight, today was one notch nearer his cherished championship match with Joe Phan-see following his elimination of Jack McCarthy of Chicago in a ten round bout here last night.

Concentrate Your Efforts-Use These Columns And Gain The Profitable Results You Want

Manchester Evening Herald Classified Advertisements Count six average words to a line. Initials, numbers and abbreviations each count as a word and compound words as two words. Minimum cost is price of three lines.

Lost and Found 1 LOST-POCKETBOOK on Main or Oak streets. Finder please call 478-J.

Articles for Sale 45 FOR SALE-ELECTRIC sewing machine. Cheap. 37 Edwards street, North Manchester.

Phone Your Want Ads To The Evening Herald Call 664 And Ask for "Bee" Tell Her What You Want

COLD? CAN'T BE 'CAUSE MERCURY DIDN'T DROP At Least Thermometer Registered Above Zero All Night; Wind Was Bitter.

HOWITZER COMPANY BIDS CAPTAIN ADIEU The principal feature of the annual banquet of the Howitzer company held Saturday night at the State Armory here was that it took on the character of a farewell party to the unit's former commander, Captain Allan L. Dexter, who has been promoted to intelligence officer of the 16th Infantry.

HOSPITAL NOTES The Memorial hospital today reported the discharge of Michael Demko of 83 Oak street and the admission of Miss Nellie Kornak of 32 Summit street and the death of Miss Katie A. Mantion, aged 75, of Golway street.

PUBLIC RECORDS Warrant Deed Walter N. Nelson to Susan M. Foster a piece of land containing about one acre located on the west side of Avery street.

Telephone Your Want Ads. Ads are accepted over the telephone at the CHANGES office...

Auto Accessories-Tires 6 BATTERIES FOR YOUR automobile, ranging from \$7 up. Recharging and repairing.

Household Goods 51 FOR SALE-BAIRDWIN and Greening armoire, medium and fancy grades.

BIG MARKET FOR BROADLEAF AHEAD Local Dealer Says Tobacco Business Is Good and Farmers Face Luck.

AWARDS MADE TODAY FOR HIGHWAY WORK Highway Commissioner John A. Macdonald today announced the award of the five following contracts based upon low bids received on January 15:

YOUNG PEOPLE'S WEEK AT SALVATION ARMY This is young people's week at the Salvation Army and services are being conducted by the various branches of the Y. P. organization.

For Sale or Rent The Herald Building 10 Hilliard St. Manchester Two stories high, of brick, mill construction, 35x100 feet, with basement suitable for storage purposes.

Index of Classifications Evening Herald Want Ads are now grouped according to classifications below and for handy reference will appear in the numerical order indicated:

Millinery-Dressmaking 19 DRESSMAKING From frocks a specialty. Mrs. W. D. Barclay, Tel. 162-2.

Rooms Without Board 59 FOR RENT-FURNISHED room and garage on Foster street, Tel. 262-2-W.

ANKLE BROKEN, REFUSES TO MISS MUSIC LESSON Local Girl Insists Upon Going to Studio After Bone Fracture While Skating.

MANY PARTICIPATE FOR CHURCH SUPPER Sunday school officers, teachers and pupils of the North Methodist church are untiring in preparations for a supper to be given in the church vestry Thursday evening from 6:30 to 7:30.

THE BOOK OF KNOWLEDGE "The Firefighters" Sketches by Bessey; Synopsis by Braucher

Help Wanted-Female 35 WANTED-EXPERIENCED typewriter on silk. Apply William Silk Corporation, Williamantic, Conn.

Help Wanted-Female 35 WANTED-2 GIRLS for general housework in girls boarding house. Apply Employment Bureau, Cheney Brothers.

NOTICE On and after January 27, I will not be responsible for any bills contracted by my wife, Mrs. Maude Hicks.

Only 52 Days Then Comes Spring FREE SNOW SHOVEL WITH EVERY LOT We offer: For \$5,500 a well built single of 5 rooms, all modern with garage space. Why pay rent.

Agents Wanted 37-A AGENTS WANTED to sell towels direct to consumer. Clinton Towel Co., Clinton, Mass.

Robert J. Smith Real Estate, Insurance, 14 Years at 1000 Main St. Steamship Tickets

GAS BUGGIES—Unanimously Agreed Upon



Only 52 Days Then Comes Spring FREE SNOW SHOVEL WITH EVERY LOT We offer: For \$5,500 a well built single of 5 rooms, all modern with garage space.

Robert J. Smith Real Estate, Insurance, 14 Years at 1000 Main St. Steamship Tickets

When the barbarians overran the Roman empire, the fire department, like so many other features of Roman civilization, sank into oblivion and for over a thousand years there were no regular fire companies. Great fires were common; Berlin was destroyed in 1405, Constantinople was swept a dozen times, London was repeatedly laid waste, and Moscow and Vienna suffered again and again.

FLAPPER FANNY SAYS:



The latest thing in pajamas is the last one to get home.

SENSE and NONSENSE

POOR COMPARISON. "How's your car running?" "Not so good; can't get her throttled down."

Only Green Wait For Signal. A traffic light Means "stop" when red-- But lips that are Mean "Go ahead."

Rehearsal. "Let's run over a few things together," said the automobile instructor to his pupil.

Do You Believe in Signs? If you do, this one in front of a farm house not a thousand miles away might interest you:

A Modern Purchaser. "This new model coach," said the salesman, "has just been reduced one hundred and fifty dollars--"

If all the miles walked by girls coming back from auto rides were added up, they would not reach quite as far as the miles ridden by the girls who have never walked home.

"She sure is built nice," said the bachelor as he viewed his new car. If he calls girls "sweeties," his car is the one with the bugle horn.

City Kid: "What are those things on top of the cow's head?" Mother: "Those are her horns, darling."

Getting a husband is like buying a car; one has to consider the trade-in value.

They call him "Jack" because he's always giving flat tires a lift.

Heard that a bootlegger was arrested the other day. It seems he had parked his car in front of a fire hydrant.

Jaywalking requires two—one to take a chance and one to catch him at it.

Compensation—the roughest roads have the fewest billboards.

A gasoline shortage is predicted by the year 2,000. By that time the cars will be so thick they can't move so it doesn't matter.

The worst traffic snarl to be caught in, is that from the back seat.

Each year piles more work on the traffic officers. There are more motorists to be bawled out.



After all is SAID and DONE this puzzle appears easy, but before that it may look a little tricky. Par is four and one solution is on another page.

Word puzzle grid with 'SAID' and 'DONE' filled in.

THE RULES

1—The idea of Letter Golf is to change one word to another and do it in par, a given number of strokes. Thus to change COW to HEN, in three strokes, COW, HOW, HEW, HEN.

2—You change only one letter at a time.

3—You must have a complete word, of common usage, for each jump. Slang words and abbreviations don't count.

4—The order of letters cannot be changed.

We have too many hit and ruin drivers—something should be done soon to encourage wreckless driving.

A man has to be a fast driver if he would keep out of the way of the modern funeral procession.

SKIPPY



Mickey (Himself) McGuire By Fontaine Fox



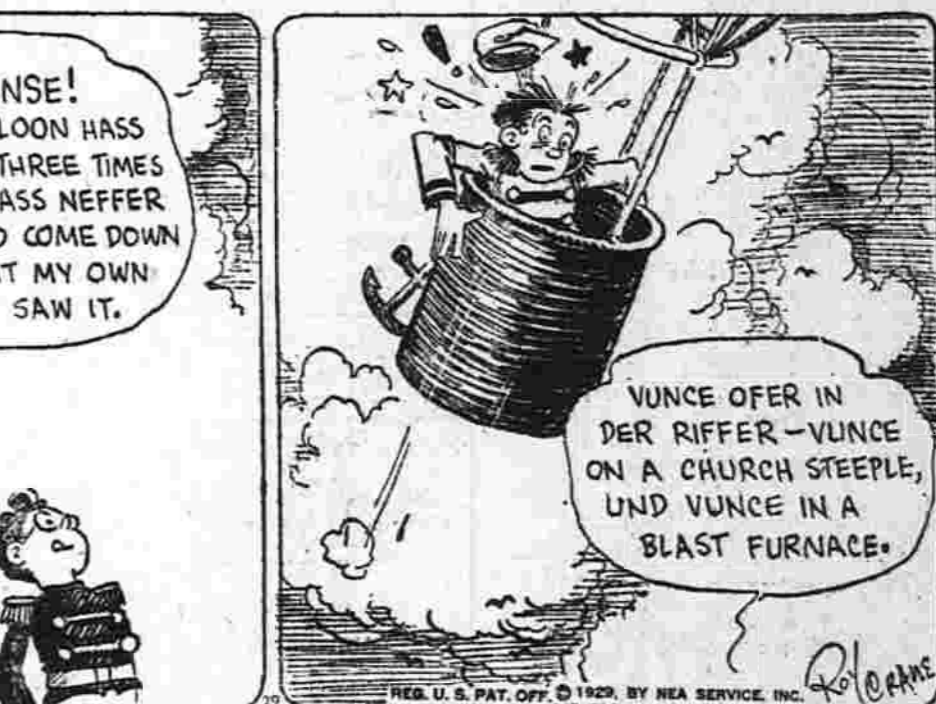
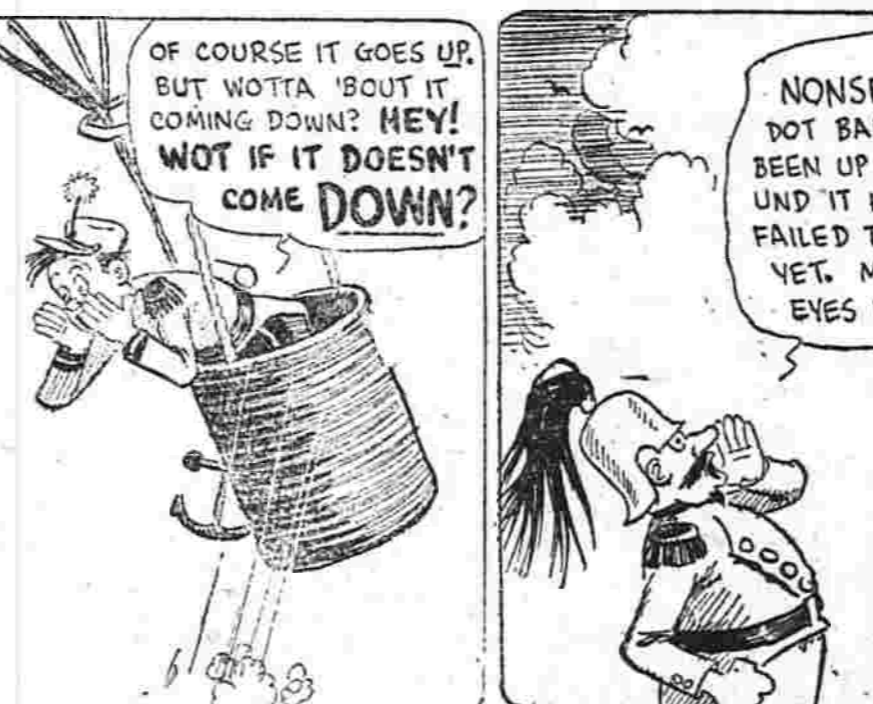
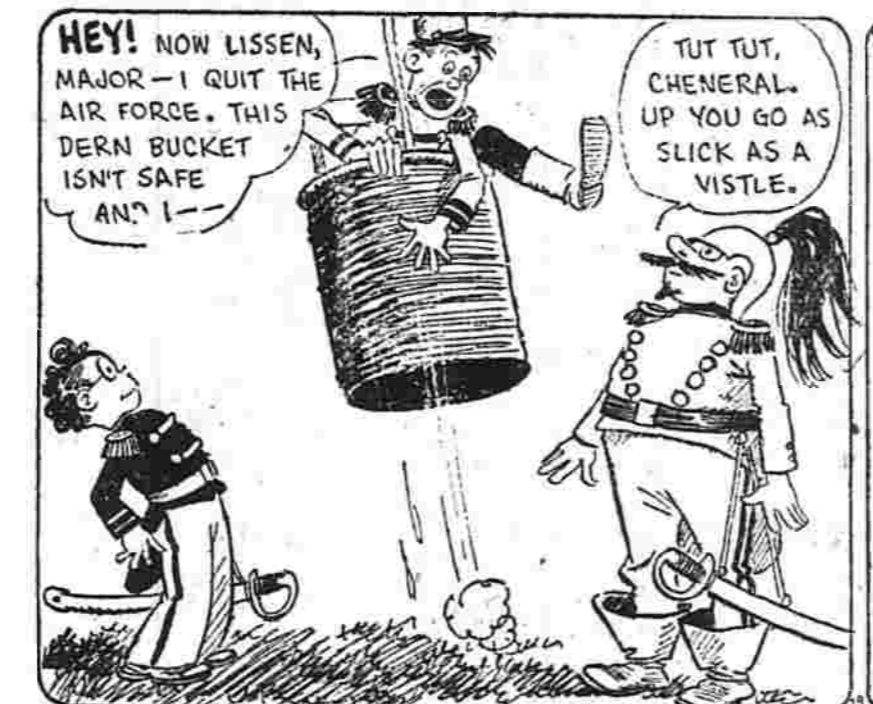
OUR BOARDING HOUSE By Gene Ahern



WASHINGTON TUBBS II

Not Guaranteed

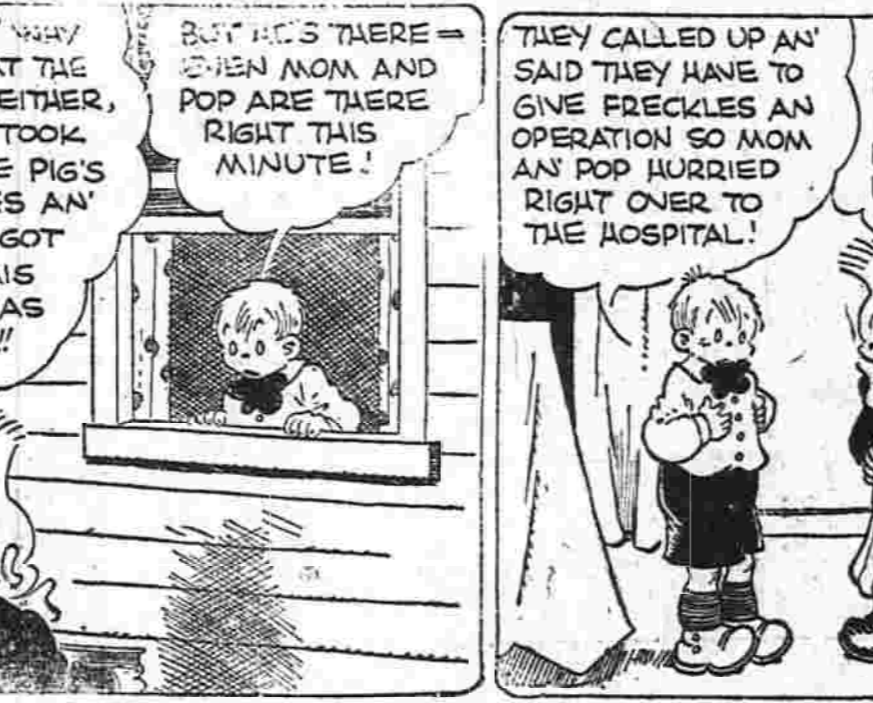
By Crane



FRECKLES AND HIS FRIENDS

Oscar Can't Let Them Spoil

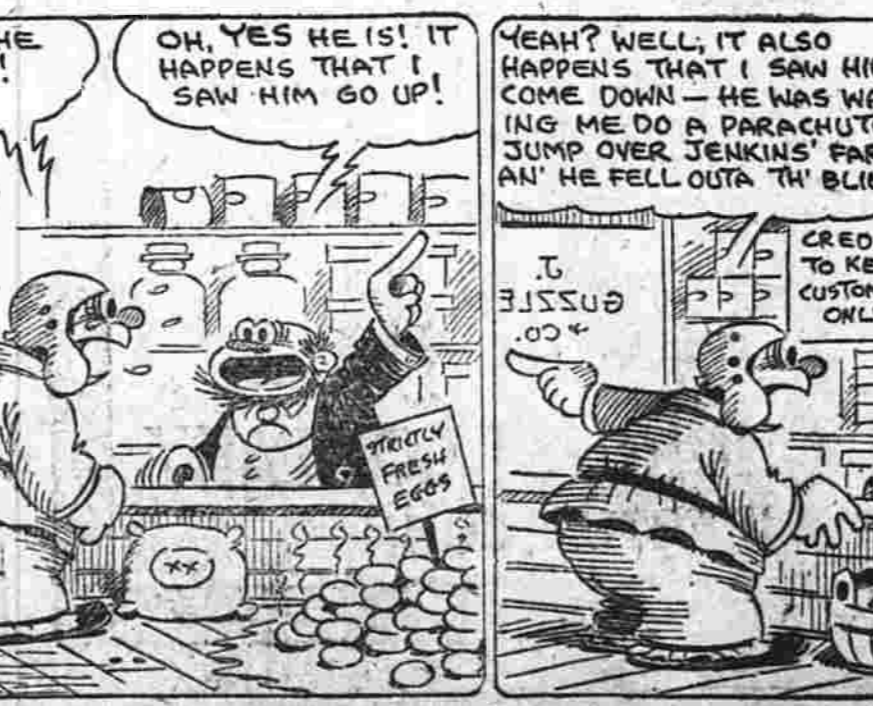
By Blosser



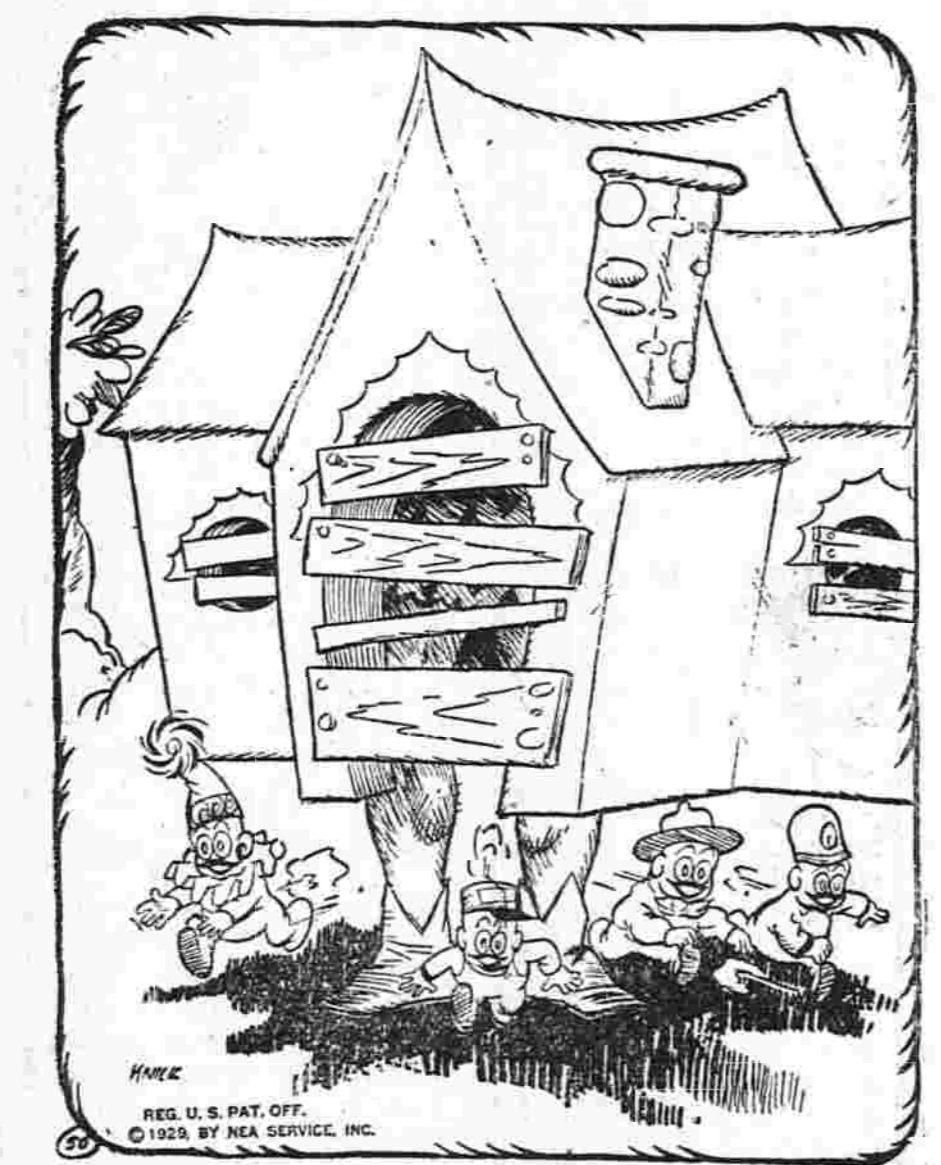
SALESMAN SAM

S. O. S. (Save Our Sam)

By Smart



THE ANYMITES



The Trouble Tots were filled with glee. Said one, "They'll soon find out that we can also play some funny tricks. We've nailed them in their shack. The giant always picks on us because he thinks we'll start a fuss. I wonder if they've found out what we've done. Let's scamper back!"

cried, "My goodness, is it dark outside! I surely thought we slept all night. There must be something wrong." It is the Trouble Tots' window in. What he discovered made him grin. He found the boards the Trouble Tots had nailed on good and strong.

(The Trouble Tots are caught in the next story.)

**PRIZE DANCE**  
**HOLLISTER ST. SCHOOL**  
 Thursday Ev'g. Jan. 31, 8 p. m.  
 Given by the Popular Dramatic Club  
 Wehr's 5-Piece Orch.  
 Tickets 50c.

**SUB-ALPINE CLUB**  
**DANCE**  
 Eldridge Street  
 Tomorrow Night, Jan. 30  
 McKay's Orchestra

**ABOUT TOWN**  
 Miss Eugenia Haverly who has been spending the past two weeks with her sister, Mrs. Carl Allen of Henry street, has returned to New York. Miss Haverly is a graduate of Manchester High school and has just completed the nurse's training course at the Long Island College hospital. She is about to take the New York state board examination.

**MODERN DANCING**  
**MASONIC TEMPLE**  
**FRIDAY NIGHT**  
**FEBRUARY 1**  
 Masonic Social Club

Mrs. Arra Sutton Mixer will give another lecture-demonstration at the Manchester Community clubhouse Thursday afternoon. Her subject at this time will be menus suitable for Valentine parties. This is a favorite time for entertaining and it is hoped a large number of the housewives will avail themselves of the privilege afforded them of learning to prepare dishes attractive to the eye as well as the palate. The lesson will begin at 2:30. If interest continues, Miss Christine Mason, recreational director at the White house, will endeavor to bring here domestic science experts in the employ of some of the other concerns in the manufacture of foodstuffs or household appliances.

Fred Schonhar of Oakland street is chairman of the bridge and whist party which is scheduled for Friday evening at the Manchester Community clubhouse. Prizes will be awarded in both sections, refreshments will be served and the social will be open to all players.

More than 20 of the members of Temple Chapter, Order of the Eastern Star will attend the sessions of the Grand Chapter of Connecticut, to be held in Foot Guard Armory, Hartford, tomorrow and Thursday.

Mrs. Frank Server and Adolph Carlson won first prizes, \$2.50 gold pieces, at the Buckland Parent-Teacher association's whist and dance in the school hall last night. Consolation prizes fell to Suzanne Batson and Joseph Pilukas. The committee in charge, Mrs. A. P. Seymour and Walter Keeney served refreshments. Dancing followed the card games.

Enter Day of Evening School, next Monday, at Conn Business College, South Manchester, and prepare for a better position.—Adv.

**Wilbur Coon Shoes**  
 Bring Us  
 The  
 Hard-to-Fit  
 Foot

THE hard-to-fit foot is usually fitted for length and ball only; the trouble then develops at instep, heel and arch.

With Wilbur Coon Shoes we can fit your whole foot perfectly because they are made with Special Measurements. Over 200 sizes... 1 to 12, AAAA to EEE.

The harder you are to fit, the more you need Wilbur Coon Shoes.

**NAVEN'S**

**Brown Thomson & Co.**  
 Hartford's Shopping Center

**Some New Spring Arrivals**  
**Cotton and Rayon**  
**Cown Stuffs**

SMART FABRICS THAT GIVE EARLY BUYERS SPLENDID CHOICE FOR BECOMING DRESSES. WEL WORTH WHILE TO COME. MAKE SELECTION NOW.

**36 INCH WOVEN RAYON**  
 in most attractive designs and liveliest colorings, each guaranteed fast. Of good weight and very lustrous  
**Priced 89c Yard**

**36 INCH SILK MIXED CREPE**  
 the choicest designs, exquisite colorings, very best grade, entirely different from the ordinary lower priced crepes, colors guaranteed fast,  
**\$1.25 Yard**

**36 INCH PRINTED RAYONS**  
 are of very rich appearance, white grounds with handsome colored designs and delicate colored plaids,  
**Priced \$1.00 Yard**

**36 INCH MICA TWEED**  
 woven cotton fabric, very desirable for women's or misses' gowns. Small neat designs and very pretty colorings, all fast.  
**Priced 75c Yard**

**CELANESE VOILES**  
 give promise of more favor this year. We are well stocked with best grades in beautiful designs, colors guaranteed fast. Two grades, with plenty from which to take choice,  
**\$1.25 and \$1.50 Yard**

**ANNOUNCEMENT**  
 You will be glad to learn that we are showing an unusually large assortment of POTTER'S ENGLISH PRINTS, genuine imported, the very best. Colors guaranteed. A strong sturdy material, ideal for children's wear. Will stand lots of tubbing. Lovely designs and different from the usual prints,  
**36 Inch, 59c Yard**

**FIGURED GABARDINES**  
 36 inch, white with colored figures and according to the fashion experts, are bound to be very popular this season,  
**Priced 69c Yard**

**SUPPER**  
 Thursday, 5:30 to 7:30 p. m.  
**NORTH METHODIST CHURCH**  
 Auspices Sunday School  
 Menu: Roast Pork, Mashed Potatoes and Turnips, Relishes, Apple Sauce, Pie, Cheese, Rolls and Coffee  
 Tickets 50c.

**PHONES Pinehurst**  
 "GOOD THINGS TO EAT"

**GOOD OLD SUMMER TIME**  
 has moved right into Pinehurst's store. Walk in to this shop tomorrow and if you haven't frozen your nose on the way you'll think, inside of five seconds, that Einstein or somebody has disposed of six full months in the twinkling of an eye. Because you'll see a perfectly beautiful array of fresh summer vegetables that look—and taste—as if you had just picked them out of your garden. Though, of course, in that case, you'd hardly get them all at the same time.

For instance, fine luscious Strawberries and ripe Tomatoes are not likely to come along together in your own garden. But they're both here. The Strawberries are from Florida and they are mighty fine ones. A full sized basket costs 49 cents. Then, besides the Tomatoes, there are Fresh Green Peas, a handsome lot, pods nicely filled out, the peas tender and young. And Green String Beans—Valentines; which as you know are a particularly fine bean. Cauliflowers, big, little and medium—white tender and delicate. And Fresh Beets, in bunches, but finely formed and crisp as if pulled but a moment ago. Then there are California Brussels Sprouts that have crossed the Continent in this winter weather without fading a shade. And fresh Carrots. And—something you can't get in summer—frozen parsnips.

Altogether this is about as fine an array of Extra Fancy Vegetables as you ever looked at. And the prices are held down—held down to the minimum.

Another lot of those Alligator Peas—and every one is ripe—at 19 cents. That's a bear of a bargain, you know—about half the ordinary big city price. One pear will make an ample salad for three or four persons.

Extra! Hooray! Anything to make a noise—because we want to get your attention for an instant to this matter: Have you tried those Sinclair Small Linked Sausages in half pound packages at 18 cents? Because if you haven't you're missing one of the delights of the year.

Phone two thousand for delivery of orders at any time after 8 in the morning.

**Fresh Strawberries** ..... 49c qt.  
 Full quart baskets. Fancy Florida berries.  
**Green Beans 23c qt.**      **Green Peas, 2 qts. 33c**  
**Florida Oranges, 2 dozen** ..... 49c  
 Boxes for kindling 50c and 75c load.  
**Keeney White Eggs** ..... 43c dozen  
 New Cabbage      Spinach  
**Fresh Scallops** ..... 39c and 59c pint  
**Fresh Oysters**      Filet of Haddock  
**Salmon**      Smoked Filet of Haddock  
**Sliced Bacon** ..... 33c lb.  
 Rind off.

**TONE... MELLOW-RICH**

**Steinlite**

Electric Radio AC WITH Dynamic Speaker

**\$150.00**  
 Less Tubes  
 With Dynamic Speaker

**Benson Furniture Co.**

Read Herald Advs

**DIAMONDS**

Diamonds, as well as other jewelry and valuables are soon destroyed by fire, and offer a temptation to burglars when stored at home. The wise thing to do is to put them in our Safe Deposit Vault where you can rent a Private Lock Box for \$3, \$5, \$10 or \$25 per year.

**THE MANCHESTER TRUST COMPANY**  
 SOUTH MANCHESTER, CONN.  
 ESTABLISHED 1905

**OUR Wednesday Thrift Specials Offer 17 Specials for Tomorrow Only**

Gray Days Are Made Gay With These  
 16 Rib, Short, Stubby  
**Umbrellas**  
 Covered With Heavy American Gloria  
**\$2.98**

The popular 16 rib, short, stubby umbrellas that fashionable girls carry on rainy days. Gilt frames covered with a good grade of American gloria. Amber handles. Plain colored twill tape edges. Navy blue, red, purple and black.

Main Floor

**Women's Silk and Wool Hose**  
 For Sports and General Wear  
**\$1.50 pair**

One group of women's silk and wool hose, many of which have been selling at \$2.00 a pair. Hose suitable for sports and general wear. Rose nude, chateau, gun metal, miami, chicadee and black and white. Not all sizes in each shade.

Main Floor

**One Group of Women's LEATHER HAND BAGS to close-out at 39c**

A limited number of genuine leather hand bags to close-out tomorrow at 39c each. Pouches and under-arm bags in assorted colors and sizes. Bags that have sold as high as \$1.00 and \$1.98.

Main Floor

**Children's SILK AND WOOL UNION SUITS \$1.29 (Regular Price \$1.79)**

Children's fine silk and wool union suits; short sleeves; knee length. Well made garments. Sizes 2 to 6 years. Regular price \$1.79.

Main Floor, Rear

**Card Tables**  
 With gay colored wood frames  
**\$1.98**

Well made and sturdy card tables with wood frames finished in bright red, green and black. Leatherette tops. Well braced. Regulation size. Before you give your next card party drop into the store tomorrow and buy one of these card tables. Regular \$2.49 grade.

Basement

**WOMEN'S FUR LINED KID GLOVES, pair \$2.25**  
 Brown kid, lined with fur—excellent for driving, sports and general wear to and from school and the office. Sizes: 6, 6 1-2, 7 and 7 1-2.

Main Floor

**J.W. Hale Company**  
 SOUTH MANCHESTER, CONN.  
 Free Delivery Daily in Town

**BOY SCOUT NEWS**  
 Troop 2 will meet tonight at the St. James' school.  
 Troop 4 will meet at St. Mary's church at 7:30 tonight.  
 Troop 6 of the South Methodist church will meet at 7:30 tonight.  
 Troop 9 will meet at the Hollister street school at 7:00 tonight. All Scouts are requested to wear sneakers or rubber-soled shoes. Don't forget! Last call for return of registration cards.

**COMPLETE RADIO SERVICE**  
 Free Tube Testing. General Repairing. Authorized Sales and Service for Majestic Atwater-Kent Kolster Radiola Eveready  
**KEMP'S**

**WATKINS BROTHERS, Inc. Funeral Directors**  
 ESTABLISHED 54 YEARS  
 CHAPEL AT 11 OAK ST.  
 Robert K. Anderson Funeral Director. Phone 500 or 283-447.



New Spring  
**Dimity Prints**  
 In Dainty, Conservative Patterns  
**Tomorrow Only!**  
**29c yard**

New 1929 spring patterns that will make up into the best looking frocks for yourself as well as the children. 36 inches wide. Neat patterns in the wanted colors that are guaranteed tub fast.

Main Floor

**Women's Cotton Bloomers**  
 That Will Give Satisfactory Wear.  
**79c**

Women's good quality cotton bloomers in plain or silk stripes. Well made, good and full bloomers that will give satisfactory wear. White, flesh and peach. Regular and extra sizes.

Main Floor

**14 Only! UNPAINTED END TABLES \$1.49 (Regular price \$3.98)**

Well made end tables to be lacquered in gay shades. Limited number—come early!

Basement

**5 Only! BOOK TROUGHS AND STANDS \$1.98 (Regular price \$3.98)**

Only 5 to sell—come early if you want one. Made of good quality painted birch.

Basement

**DRUG SPECIALS**

50c Rubbing Alcohol ..... 35c  
 50c Ovaltine ..... 39c  
 \$1.00 Ovaltine ..... 75c  
 60c Zonite ..... 39c

Main Floor

**NOTION SPECIALS**

5c Coat Hangers ..... 3 for 10c  
 Wright's Bias Tape ..... 10c  
 Irregulars. All colors. Width 5, 6 yard pieces.  
 Hickory Sanitary French Panties ..... \$1.25  
 Made of fine checked muslin trimmed with blue. Medium and large sizes.

Main Floor